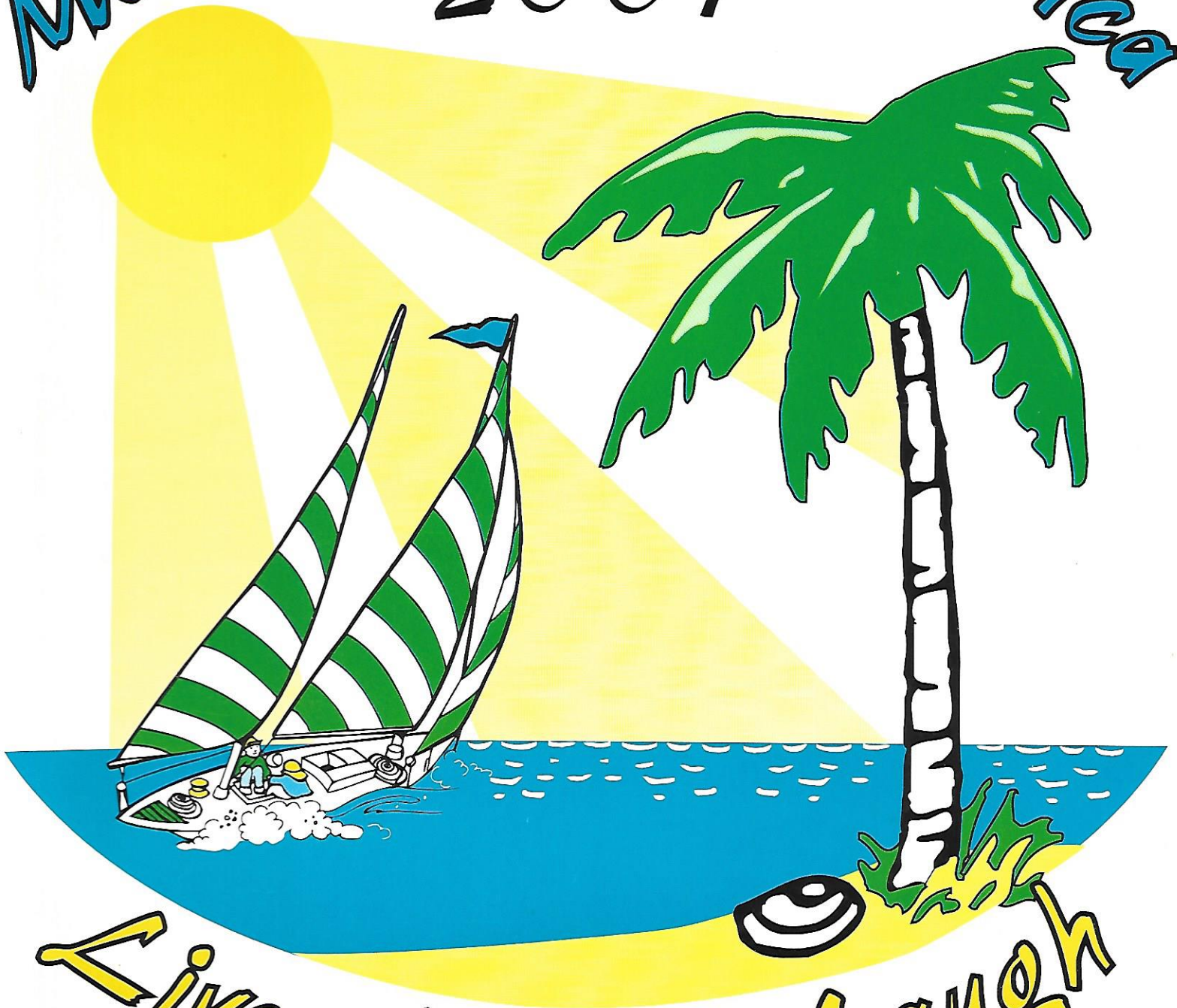
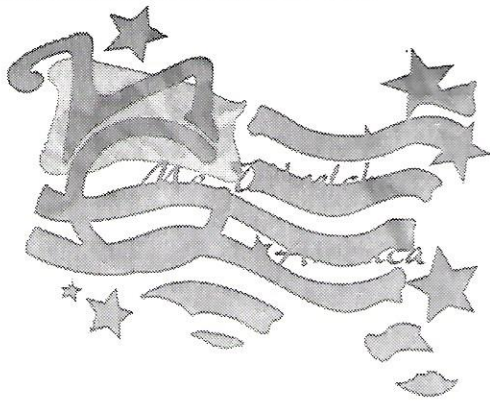


# Ms. Wheelchair America 2001



Live, Love & Laugh  
Fort Lauderdale, Florida



## *Former Ms. Wheelchair Americas*

Tracy Charlton-O'Connor  
Christina Gilmore  
Terri Cecil  
Elaine Stefanowicz  
Amy L. Baxter  
Wendy Petzold  
Dawn Shannon Blodgett  
Kim Mensi  
Deanna Greene Van Hook  
Mercedes Rodriques-Fowler  
Kathy Garcia  
Jewell Massey  
Peggy Simpson  
Sandra Honbaier  
Donna Cline  
Lori Cottam  
Gaynell Colburn  
Barbara Crozier  
Marian Schooling Vessels  
Vivian Thompson  
Nancy Pudvin  
Marge Chmielewski  
Margie Sloan  
Beverly Chapman  
Dixie Lee Etheridge  
Kathy Smith Tiley  
Janie Robinson

South Dakota  
Wisconsin  
Kentucky  
Washington  
Texas  
Wisconsin  
California  
Alabama  
Texas  
Florida  
Utah  
Georgia  
Alabama  
North Carolina  
Nevada  
Utah  
Maryland  
Alabama  
Maryland  
Massachusetts  
Georgia  
Michigan  
Georgia  
Florida  
Mississippi  
Alabama  
Texas

In Memory of Janie Robinson & Beverly Chapman

THANK YOU LADIES FOR YOUR DEDICATION  
TO MAKING THINGS BETTER FOR THE DISABLED COMMUNITY.

GOD BLESS YOU ALL!!



## **The Ms. Wheelchair America Board of Directors**

### **Executive Director**

Barb Cramer  
525 Meadowlark Drive  
Lakewood, CO 80226  
Phone: (303) 232-4065  
Fax: (303) 237-0619

### **President**

Gail McKoon  
3811 Conrad Drive  
Columbus, GA 31909  
Phone: (706) 563-2074  
Fax: (706) 653-4560

### **Vice President**

Rev. Lisa Muscarella  
800 S.E. 2<sup>nd</sup> Avenue  
Ft. Lauderdale, FL 33316  
Phone: (954) 467-7049  
Fax: (954) 468-1221

### **Secretary**

Judy Holt  
1337 Burns Avenue  
Iowa City, IA 52240  
Phone: (319) 351-8375

### **Treasurer**

Kaye Barrier  
525 Seminole Center  
North Myrtle Beach, SC 29582  
Phone: (843) 272-2980  
Fax: (843) 272-8246

### **State Coordinators**

Paige Hebson - *Alabama*

Barb Cramer - *Colorado*

Craig Strain - *Georgia*

Pat O'Bryant - *Kentucky*

Lisa Kirk - *Michigan*

Lowery Lockard - *Ohio*

Carrie Padgett & Danny Curvin - *Tennessee*

Patty Kolb - *California*

Lisa Muscarella - *Florida*

Judy Holy - *Iowa*

Robert Watson - *Maryland*

Jeanine Stodardt - *New Jersey*

Vickie Kerkvliet - *South Dakota*

Elaine Stefanowicz - *Washington*

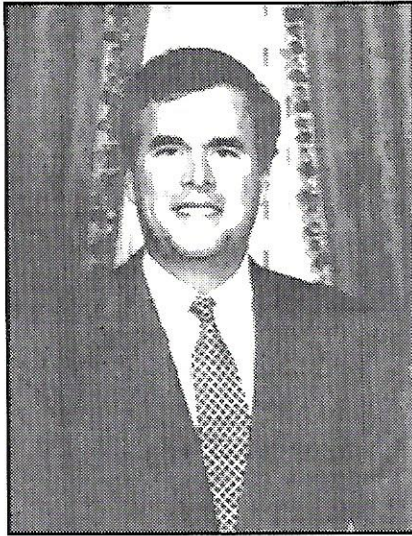
Jennifer Gasner - *Wisconsin*

### **Volunteers**

Bill & Pauline Daugherty  
Joe Wolford & Michelle Nutter  
Alexander Cruz  
Danielle Cruz  
Mercedes Cruz  
Orestes "Rusty" Hernandez  
Maylin Lopez  
Maria Luisa Morales  
Megan Norem  
Joan "Spikey" Alberto Torres a.k.a "Sticky"  
Audrey Lorence, Ms. Broward County 2000  
Angie, Sharon & Jimmy Koors

U.S. Navy & Sea Cadets with Commander Star  
Kevin, Jolene, Misty & Naomi Nuss  
Sherri Koors, Jr. Ms. Wheelchair Florida 1999  
Patrick Rogers  
Annmarie Vachala  
Anna Vachala  
Roxanne Shaw  
Nicole Ortiz  
O.Y. Thomas  
Bob Edmonds  
Bill Murphy, Big 106 S. Florida's Classic Rock  
Terri Kacie, Ms. Wheelchair Florida 1991

## **THANK YOU!!**



JEB BUSH  
GOVERNOR OF THE STATE OF FLORIDA

August 12, 2000

Dear Contestants:

It is a pleasure to extend a personal welcome to all of the contestants competing in the 28<sup>th</sup> national **Ms. Wheelchair America Program 2001** being held this year in Fort Lauderdale. I understand your theme this year is "*Live, Love & Laugh.*"

As you participate in this competition, stay focused on your goals and remember you benefit from this experience no matter the outcome. The knowledge and self-confidence you gain through this competition will be helpful throughout your life.

More than 45 million Americans are disabled and in need of a more accessible environment. The elimination of the architectural and attitudinal barriers through educating the public of the dignity, attractiveness, and productivity of disabled women whose only limitations are those of mobility has been the goal of the Ms. Wheelchair Florida Pageant. As the National Ms. Wheelchair, you will be a role model for younger and newly disabled individuals, as well as a spokesperson for disabled residents of the nation.

Good luck to each of you.

Sincerely,

  
Jeb Bush

JB/hss





CITY OF  
**FORT LAUDERDALE**  
FLORIDA

*"The Venice of America"*  
**JIM NAUGLE**  
MAYOR

100 NORTH ANDREWS AVENUE • 33301  
(954) 761-5003  
(954) 761-5667 FAX

Welcome to Fort Lauderdale!

On behalf of the City Commission and citizens of Fort Lauderdale, I cordially welcome the Ms. Wheelchair America Program 2001 being held August 8-13, 2000.

We are honored that Fort Lauderdale was selected as the site for the Ms. Wheelchair America Program 2001 and hope that during your visit you will take advantage of the many wonderful sites and attractions our City has to offer.

With more than 165 miles of navigable waterways, Fort Lauderdale is a boater's paradise that truly lives up to its world class designation as the "Venice of America." We invite you to take a cruise aboard a water taxi to experience the beauty and charm of the City's Intracoastal Waterway and New River, while gaining a firsthand look at magnificent multimillion dollar homes, internationally renowned hotels, fine waterfront restaurants, and nightspots, among other scenic treasures.


You will also want to visit picturesque Riverwalk, a mile-long linear park featuring a brick-paved walkway that winds along the New River in downtown Fort Lauderdale. Riverwalk serves as the cornerstone of the City's cultural, arts, and science district which includes the Museum of Discovery and Science, the Broward Center for the Performing Arts, the Museum of Art, and several historic buildings dating from the late 1800s.

If shopping and dining are your pleasure, Las Olas Boulevard is the place for you. With more than 50 upscale shops, boutiques, sidewalk cafes, and restaurants, Las Olas Boulevard has gained international acclaim as Fort Lauderdale's centerpiece for fashion, fine cuisine, and entertainment.

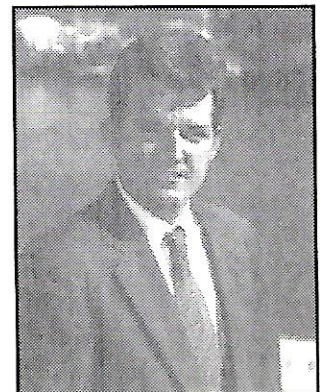
Of course, no trip to our City would be complete without a visit to our world famous beach. Featuring the City's award-winning wave wall and signature beachfront promenade, Fort Lauderdale's beach offers premier opportunities for recreation, relaxation, and enjoyment, along with breathtaking views of the Atlantic Ocean.

We hope that your visit to Fort Lauderdale will be a very memorable one, and we encourage you to visit us again soon.

Best regards,



Jim Naugle  
Mayor



The City of Fort Lauderdale

Salutes

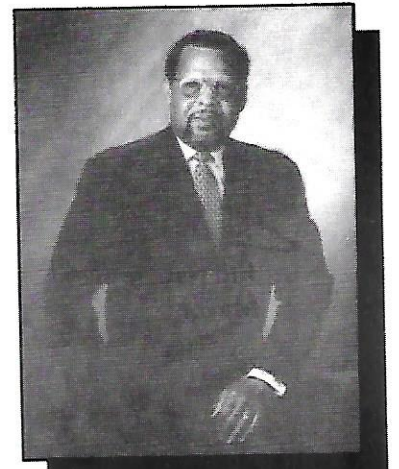
The Ms. Wheelchair America Program 2001

for its dedication and commitment to

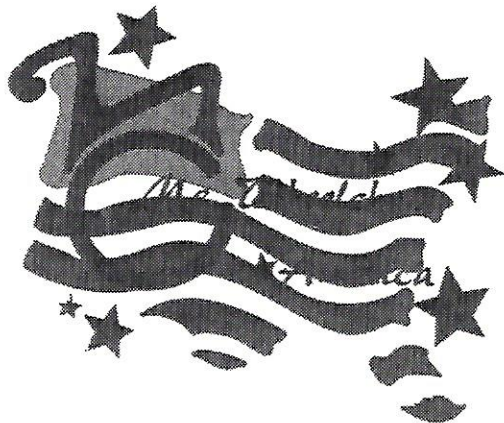
promoting the accomplishments of

women with disABILITIES.

Congratulations on your outstanding work!







August 8, 2000

TO: Contestants, Companions,  
Families, Sponsors  
and Friends of the Ms.  
Wheelchair America  
Program

FR: Barbara Cramer, Executive  
Director *BC*

A very special welcome to ALL of  
you who are involved in some way in  
the 2001 Ms.

Wheelchair America Pageant, being held this week in Ft. Lauderdale,  
Florida. Lisa Muscarella and her committee have worked very hard to  
make this pageant one of the most memorable Pageants ever!!

This is the 28th year of MWA, and all of us on the Board of Directors  
are very excited to have so many contestants vying for the title. We  
are extremely pleased to welcome back several 'old' states, as well as  
having several new states involved this year.

This year has been doubly exciting for me, as I have had the  
privilege of working with our current titleholder, Tracy  
Charlton-O'Connor. Tracy has had an amazing year traveling across  
America. Some of her years events included meeting with President  
Clinton, speaking at major hospitals and schools across our nation,  
attending awards ceremonies, fund-raisers, seminars, ability shows and  
pageants, leading parades, appearing in major magazines, and being  
interviewed by People Magazine (for a later publication), as well as  
speaking at Think First Programs across the USA. Her greatest  
achievement, however, was becoming Mrs. Brian O'Connor, in a beautiful  
ceremony, on December 4, 1999, in her home town of Rapid City, South  
Dakota.

Tracy (as well as many MWA titleholders before her), overcame personal  
tragedy, then went forward to not only dedicate her year, but her  
life, for the betterment of others. This is what being involved in the  
MWA Program is all about and I thank you Tracy, so much, for an  
incredible year.

On behalf of the Board of Directors, I am thrilled to be in Ft.  
Lauderdale, and to welcome all of you to this beautiful city. I would  
hope that from this experience, all of you, especially the  
contestants, will stay involved in, and support your state programs  
upon your return home. The MWA Program CANNOT be successful without  
you.

Once again, a very special thanks to Lisa Muscarella and the Ms.  
Wheelchair Florida Committee for hosting this event. It takes an  
incredible amount of time and work to host an event of this caliber,  
and all of us on the Board appreciate it very much.

August 8, 2000

**TO: Delegates, Companions, Family Members, Sponsors, Judges, and Friends of the Ms. Wheelchair America Program**

**FROM: <sup>gm</sup> Gail McKoon, President**

Welcome to Fort Lauderdale! It is great to see all of you here in sunny South Florida.

On behalf of the Ms. Wheelchair America Board of Directors, I would like to say "Congratulations" to every person who has worked so hard for the success we are now experiencing in this great program. This year we are proud to announce a record-breaking twenty six delegates!

I would like to extend very special "thank yous" to the following:

**Tracy Charlton O'Connor, our reigning Ms. Wheelchair America.** We could never thank you enough for your sweet and loving spirit and for the cooperative attitude you have shown in working with the Board of MWA. You have spent your year advocating for the rights of persons with disabilities, educating the public about the abilities of persons who happen to have disabilities, getting much needed and very positive media attention, and "selling" the MWA Program all over the United States. We are so proud of you –and so grateful to you. You have been a blessing and a joy to all of us!

**Lisa Muscarella (our sweet and gracious Host State Coordinator), the MWF Board, and Ft. Lauderdale volunteers.** You have done an incredible job of putting together a lovely program here in this beautiful Florida setting. It is easy to see that you all have a great love for and dedication to the Ms. Wheelchair America Program. We deeply appreciate all the thought and effort you put into MWA2001. We are all going to have a wonderful week, thanks to you!

**State Coordinators.** We are so proud of the time, talents and loyalty you put forth in your individual states to assure the success of those programs. We are in awe of the amazing jobs you do in "juggling" all the day-to-day responsibilities and duties you have while still managing to keep your state program going. We treasure your commitment to MWA.

**Delegates.** You have served your state well. We look forward to working (and having fun!) with you this week as you participate in this national competition. We hope you will have a great time, learn something new, and make friends you will keep for a lifetime. Just be yourself! Thank you for being here.

**Independent Delegates.** We thank you for all the work you have done to gain the opportunity to compete in this national competition. We respect the commitment you have made to MWA and look forward to working closely with you during the coming year as you organize your own state's pageant. You are all incredible women!

Again, I would like to welcome everyone to MWA2001, and to thank each of you for your efforts toward making Ms. Wheelchair America a successful organization.

**You are important to the Ms. Wheelchair America Program!**



Rev. Lisa Muscarella  
800 S.E. 2nd Avenue  
Ft. Lauderdale, FL 33316  
Home: (954) 467-7049  
Fax: (954) 468-1221  
Pager: (954) 248-7735

August 8 - 13, 2000

Dear Friends:

Welcome to BEAUTIFUL FT. LAUDERDALE, my hometown! I am so EXCITED to be hosting the Ms. Wheelchair America Program 2001 here in Sunny South Florida. It was my dream for the state program to be held here and three years ago that dream came true when I was asked to be the director of Ms. Wheelchair Florida Pageant, Inc. But I never dreamed that this would be happening now, and I am so very proud and honored to be part of it.

The year has not been an easy one but the group that I work with on a daily basis planning the State Program and Nationals have worked faithfully to make this program a success. Kristina Liddle, our Jr. Miss Wheelchair Florida 2000, a Dedicated, Determined, Feisty Young Lady, whom we see as a FUTURE M.W.A. - Keep up the good work. Annette Sabarese, our newest member, thank you for being so dedicated and caring. Laurie Gutches, our Historian and Mary Kay Contact, thank you for being so willing to help in anyway you can. Jerry Mintze, our Journal Coordinator, thank you for always being an encouragement. Terri Kacie, part of our Fund Raising Committee, thank you for being there every year to help us raise the funds we need. Kathy and Tammy Reed, our Fund Raising Coordinators, thank you for never grumbling about your job and for always having smiles on your faces. Senator Matt & Mrs. Charley Meadows, part of our P.R. Committee, thank you for realizing how important this program is and for helping us get the word out. Mike Cowan, our Judging & Scheduling Coordinator & Yvelisse Cowan, our P.R. Coordinator, neither could be with u this week due to illness. We ALL love and miss you very much and want to know how much I truly appreciate all you do for this Organization and the disabled Community. Ileana Cruz-Martinez, our gift coordinator and MY BEST FRIEND, thank you for the wonderful job you do for the pageant and for being a wonderful friend! And last but surely not least, The Vice President - MY GIFT FROM GOD AND PARTNER FOR LIFE, MY WONDERFUL HUSBAND Rev. Ron Muscarella, thank you for all the help, the late hours of paperwork, all the envelope stuffing and most of all for putting up with my crankiness. I LOVE YOU WITH ALL MY HEART!! I would also like to thank Ms. Wheelchair America Board of Directors, Barb Cramer, Gail Mckoon, Judy Hoit & Kaye Barrier for allowing me to be a part of such a professional and classy group of ladies, thank you for all of your encouragement and support. A special thank you to Robin Heffner for all of your help. Thank you to all of our volunteers for being so dedicated and for taking time away from your personal lives to being a part of this event. May your lives be tremendously blessed for all your dedication. I want to thank Tracy Charlton-O'Connor, Ms. Wheelchair America 2000 for being such an example to and for the disabled community. YOU ARE SUCH AN INSPIRATION!

To our contestants. I wish you all a wonderful time. Only one will leave here with the Title & Crown, but if you allow this program to do for you just a tenth of what it has done for me, you will all leave here WINNERS! Thank you for being here and have a great time!!

MAY GOD BLESS ALL OF YOU FOR BEING A PART OF THIS YEARS PROGRAM!!

Rev. Lisa Muscarella  
President, Ms. Wheelchair Florida Pageant, Inc.  
Vice President, Ms. Wheelchair America Pageant, Inc.

# Purpose And Goals

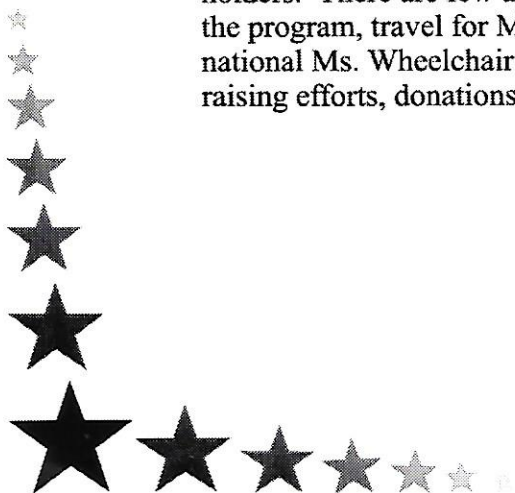
## Ms. Wheelchair America Program

The Ms. Wheelchair America Program is in no way a beauty contest. It is, instead, a competition to select the most accomplished articulate spokesperson for other persons with disabilities in the United States. The selected representative must be able to communicate both the needs and the accomplishments of her constituency to the general public, the business community and the lawmakers. She is charged with a continuing effort to educate the public regarding the dignity, productiveness and basic value of disabled people. She assumes the responsibility for the ongoing effort to eliminate the architectural and attitudinal barriers that prevent people with disabilities from assuming their rightful place in society.

As Ms. Wheelchair America, her duties are numerous. Each year she has the opportunity to travel, visiting advocacy groups, making public appearances and conducting television, radio and print interviews in the fulfillment of her major responsibilities. These include promoting awareness of the needs of disabled persons, creating an awareness for the need to eliminate architectural and attitudinal barriers and informing the able-bodied public of the achievements of physically disabled people across the nation.

We plan and conduct a four-day event to select our new Ms. Wheelchair America. The program is more than just the judging panel and one 'winner' is named. We schedule workshop sessions where we offer interesting topics of personal enhancement for the women, whether about grooming, communications and inter personal skill development, networking with community programs and other educational topics. We offer 'free time' to allow for information exchange between contestants to take place. Many new friendships are started from the program, as women validate the fact they are not the only one to use a wheelchair and experience some of the things they share with each other. The program offers an opportunity to enjoy five days at a luxurious hotel setting- here the contestants are really treated as special guests. The program is much more than just a healthy competition...it's an opportunity to see the potential within and to challenge personal growth.

The planning board for Ms. Wheelchair America is made up of volunteers from many different community organizations, businesses, private citizens, and previous title holders. There are few administrative costs to the program. All expenses for hosting the program, travel for Ms. Wheelchair America and expenses associated with the national Ms. Wheelchair America Program must be secured through various fund-raising efforts, donations, etc. We welcome your assistance.





*Proud Sponsor of  
MS. Wheelchair Florida  
Laura Nimz*



*What do you need?*

*Business stationery?*

*Bring it on.*

*Flyers and brochures?*

*No problem.*

*Advertising and sales materials?*

*We're ready.*

*Catalogs and manuals?*

*Our kind of work.*

*Presentations and reports?*

*Got you covered.*

*Business forms?*

*We grew up on them.*

**Tel: (954) 525-0342 • Fax: (954) 523-6679**

**1335 South Andrews Avenue • Fort Lauderdale, Florida 33316**

**www.dtdigital.com • email: [printing@dtdigital.com](mailto:printing@dtdigital.com)**

*"Your Image Is Our Business"*









# *A Farewell Message From Ms. Wheelchair America Tracy Charleston O'Connor....*

Greetings. It is my pleasure to welcome all of you to the Ms. Wheelchair America Program. This year's program will give the women competing for the title of Ms. Wheelchair America 2001 the experience of a lifetime. Many new friendships will be formed and the accomplishments of these talented women will inspire all of us.

Throughout my year as Ms. Wheelchair America 2000, I have had many unforgettable experiences, which will provide fond memories that will last a lifetime. I have had the opportunity to travel coast to coast spreading the message of my platform, which is "Use your mind to protect your body." In addition, I hope that I have also been able to break down and raise awareness of many of the architectural and attitudinal barriers which still exist in our country. Just some of my travels have included two visits to the Shriner's Hospital in Philadelphia, where I was able to bring smiles to many young faces. I have also had the opportunity to travel to Ft. Lauderdale, Florida to visit the site of the 2001 Ms. Wheelchair America Program. I was also invited to Beverly Hills, California for the 17<sup>th</sup> Annual Media Access Awards. While I was there, I met several celebrities and had the opportunity to meet Cynthia Wang with People Magazine. She recently interviewed me while I was attending an Abilities Expo in New York and hopefully will be printing a story about the Ms. Wheelchair America Program. Recently, I attended the Ms. Wheelchair Colorado and Ms. Wheelchair Georgia Pageants. My most memorable trip of all, however, was to Washington, D.C. where I addressed the Library of Congress, met with Senator Tom Daschle, and had the opportunity to meet the President of the United States in the White House.

As you can see, it has been a busy and exciting year, but it is an experience I will never forget. I have had the opportunity to make many new friendships that I know will last a lifetime. I would like to wish all of this year's contestants the best of luck in the Pageant and in their futures. I hope that this year's Pageant will be as fun and rewarding for all of the contestants as it was for me one year ago. As I say farewell, I would like to especially thank all of my wonderful family for their support and love, and to wish the new Ms. Wheelchair America the best in her future endeavors as she travels the country advocating for persons with disabilities and inspiring all those she meets.

*Tracy*





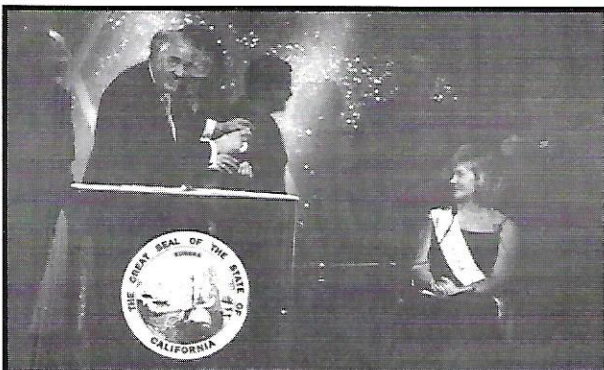
With Ms. Wheelchair Colorado & Ms. Wheelchair Nebraska - top left

At Ms. Wheelchair S. Dakota Pageant - top right

With The New Ms. Wheelchair S. Dakota - left

Receiving Key To The City of Fort Lauderdale - 2nd from bottom

Receiving Black Hills Gold Pin! - Below



Parade in Rapid City- above

Media Access Awards on stage with actors from the movie "The Other Sister" - left





Meeting President Clinton at The White House



My family and I at the  
Ms. Wheelchair Colorado Pageant



Shiner's Hospital  
in Philadelphia



With Barber Cramer  
at my wedding



*Our Wedding December 4<sup>th</sup>, 1999*

# *Paramount*

## *Full Service Vending*

1411 Southwest 31<sup>st</sup> Avenue - Pompano Beach, Fl 33069  
Telephone: 954/ 978-0500

~

### **PARAMOUNT VENDING**

*Cigarettes - Games -*  
*CD & "Touch Tune" Juke Boxes*  
Pool Tables

~

### **PARAMOUNT AUTOMATED FOOD SERVICES**

*Coffee Service - Catering - Full Line Vending*  
Candy - Chips - Cookies - Canned Soda - Juices  
"Hot Choice" Vending - Hot & Cold Food

# *Paramount*

1-800-800-0052

Broward: 954/ 978-0500  
Dade: 305/ 947-4929

Palm Beach 561/734-6441  
Facsimile: 954/978-9731



Sharp Marketing wishes to extend our best wishes and congratulations  
to all of the Participants, Supporters and Sponsors of the  
Ms. Wheelchair America Pageant.

We are proud to be a longtime supporter of your great organization,  
and we are looking forward to facing the many challenges  
of the new millenium together.

*TREAT  
THE EARTH  
WELL.....*

*IT WAS NOT GIVEN  
TO US BY  
OUR PARENTS....*

*IT WAS LOANED  
TO US  
BY  
OUR CHILDREN!!!!  
Ancient Proverb*

***"IN BUSINESS TO PROMOTE YOUR BUSINESS"***



**SHARP**  

---

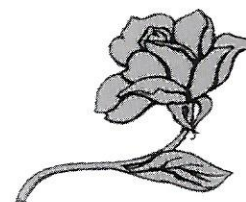
**MARKETING**

• Promotions • Business Gifts • T-Shirts • Embroidery • (954) 565-2711

# Ms. Wheelchair Wisconsin



would like to thank all her  
sponsors for their support!

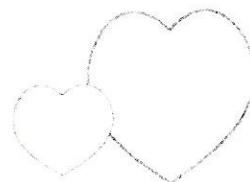


Muskego Nursing Home  
Contracting and Material Co.  
M & I Bank  
John S. Ingersoll, Jr.  
Matty's  
Thomas Jewelers  
International Sales Co., Inc.  
The Aud-Mar Supper Club  
Tri City National Bank  
E.J. Salentine, Inc.  
Driscoll's  
Grandma Kurer  
Marc and Kathy Addis  
Kenny and Darleen Baas  
Mark and Donna Higgins  
Ray and Marge Kartes  
Roy and Betty Burlingame  
Mary Patzke and Joe Schweitzer

Greg and Kris Schweitzer  
Ruth Gloyer  
Douglas and Dianne Hoskins  
Kay Fitzgerald  
Victor Kurer  
John and June Zrofsky  
Ken and Jeanie Riesch  
Gerry and Colette Giefer  
Andy and Sally Wolf  
Jim and Amy Lange  
Terry and Barb Fitzpatrick  
Ron and Mary Kurer  
Tim and Dawn Curry  
Tom and Sheila Nelson  
Brian and Sandy Waters  
And all of my supportive  
Family and Friends!

I want to give a special thank you to  
Harry, Angel, Debbie, Judy, and Gina  
for their support and help!

*Thank you! Love, Jenny*





*Family and Friends of  
Dr. Jean McCutchan,  
Ms. Wheelchair Indiana 2000*

*Are behind her,  
Supporting her All the Way*



---

# Psychological and Family Consultants

Is Proud of our Dr. Jean  
McCutchan, Ms. Wheelchair  
Indiana 2000. Good Luck in  
Ft. Lauderdale.



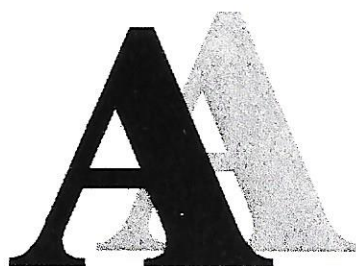
**Psychological and Family Consultants** Telephone: 219-522-6292  
Fax: 219-522-0481

926 E. Jackson Blvd.  
Elkhart, Indiana 46516



Manufacturer & Supplier of Truck Equipment~  
Complete Line of Quality Used Trucks

***Double A***



***Body Builders***

*Jimmy Ard, owner*

*Sammy Ard and Ken Ard, operators*

Highway 51 North

PO Box 363

Pamplico, SC 29583

PH: (843) 493-5021

Fax: (843) 493-1995

*"Proudly supporting Ms.  
Wheelchair South Carolina  
2000...Nicki Ard"*





# Judging Criteria

The Ms. Wheelchair America judging is based upon criteria established by the national committee of the Ms. Wheelchair America Program. The following excerpts were taken from official guidelines:

## A. Accomplishments (40%)

1. Personal achievements/accomplishments since onset of disability only in the following areas:

- A. \*Academic
- B. \*Vocational
- C. \*Personal

2. Adjustment to disability

## B. Community Skills (40%)

- 1. Ability to deal with media, peers, civic groups, etc.
- 2. Public Relations skills.
- 3. Advocacy for persons with disabilities
- 4. Self-confidence/motivation/initiative/creativity.

## C. Self Perception/Projection (20%)

- 1. Poise, demeanor
- 2. Appropriate attire, personal presentation.

\* Ms. Wheelchair America is not a beauty contest and this category is not taken as a license to choose the most attractive entrant. Instead, the items in this category are simply to express a desire to have a pleasing appearance capable of Obtaining favorable responses from any audience before which Ms. Wheelchair America would appear.

Ms. Congeniality is chosen by the contestants for this year's pageant for her friendly and cheerful personality and her Helpfulness to them during the program weekend.

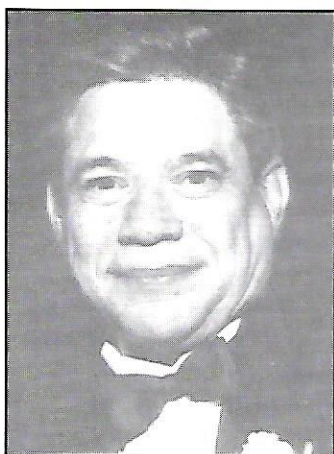


Ms. Wheelchair America, Inc.

## Ms. Wheelchair Creed

- As Ms. Wheelchair America, I promise to do my utmost
- To promote public awareness of people with disabilities...
- To give unstintingly of my time and effort to this purpose...
  - To Strive to achieve the best that is within me...
  - To offer my hand in friendship to everyone I meet...
    - To be cheerful, honest and loving...
    - To give hope to the less fortunate...
    - To set an example by my attitude...
- And to do all this with grace, warmth and dignity.





## **HEAD JUDGE: TOM O'BRYANT**

Tom is retired from Champion International Corporation in Stamford, Connecticut, where he served as Vice President - Equal Opportunity Affairs and Work/Family Services. He attended Bellarmine College in Louisville, Kentucky, where he obtained a degree in Business Administration (Major in Personnel Administration). Afterwards, he attended the University of Louisville for graduate courses in Business Administration. He also served in the United States Army Reserve from 1961 - 1970.

Tom has been affiliated with the President's Committee on Employment of People with Disabilities in Washington, D.C., serving as Chairman of the Employee Committee for eight years, and on the Executive Committee for several years. He has held several positions on the Connecticut Governor's Committee on Employment of People with Disabilities in Hartford, where he held the position of Chairman. Other past and present affiliations include: Georgia Governor's Council on Disabled in Atlanta, National Rehabilitation Association, Georgia Rehabilitation Association, and Consortium on Placement, Business Information Processing Education for the Disabled. Tom has served as judge in the 1985 and the 1994 Ms. Wheelchair America Program and as judge/head judge in several state pageants. Tom is Past President of the Ms. Wheelchair America Board of Directors (1995-1999).

Tom and his wife, Pat, live in Louisville, Kentucky. They have four children and three grandchildren. Tom enjoys many hobbies, including fishing and traveling.



## **JUDGE: LAURA L. ABDELAZIZ**

Laura L. Abdelaziz is a human services professional with twenty years experience working with individuals with mental retardation and other developmental disabilities and/or psychiatric disabilities. She has provided services to individuals with special needs in residential, vocational, leisure/recreational and day program settings. Ms. Abdelaziz is a dedicated individual with a strong commitment to quality services, teamwork, and community participation.

Laura was awarded a Bachelor of Arts degree in Psychology for the University of Maryland University College in 1982. She began work on a Master of Arts degree in Special Education at the George Washington University in 1987. She possesses a wide range of experience working on behalf of individuals with mental, physical, and emotional disabilities. She has worked as manager, trainer, facilitator, advocate, evaluator, and developer to private and government agencies in the Washington Metropolitan area.

Laura is a member of the American Association on Mental Retardation (AAMR), TASH (formerly The Association for the Persons with Severe Handicaps), and the Association for Professionals in Supported Employment (APSE).

Currently, Ms. Abdelaziz is the Director of "Making Connections", a social membership group for individuals with cognitive disabilities serving Maryland, the District of Columbia, and Northern Virginia. She also manages a program for the ARC of the District of Columbia, which assists individuals with Developmental Disabilities rent or purchase their own homes.





### **JUDGE: SHARON D'EUSANIO**

Sharon D'Eusanio is the Assistant Director of the Division of Victim Services and Criminal Justice Programs for the Office of the Attorney General for the State of Florida. Ms. D'Eusanio attended Cleveland State University and currently resides in Boca Raton Florida. She was the victim of a violent crime, which took her eyesight and nearly took her life in May, 1980. In April 1981, she began speaking out on behalf of victims of crime, telling her own experiences, and offering a message of self-motivation, perseverance and determination. Ms. D'Eusanio is an author and nationally recognized speaker who has appeared on radio and television, including ABC's 20/20. She has been featured in national and local newspapers and maga-

zines as well as publications in Great Britain, Canada, New Zealand, Greenland, Denmark, Germany, Africa and South Africa. Ms. D'Eusanio has received local, state, and national recognition for her victim activism.



### **JUDGE: MICHAEL KILLINGSWORTH**

Michael is a Level I Certified Interpreter through The Texas Commission for the Deaf and Hard of Hearing, a certification he has held since 1978. He is also a member of the Texas Society of Interpreters for the Deaf. In 1990, the Department of Transportation issued the mandate of non-discrimination of passengers who are disabled for all U.S. air carriers and this mandate carried a requirement of training. Michael was selected to manage, create, coordinate and facilitate "Disability Awareness" training to each customer contact employee worldwide. This training was later recognized with an award by the Paralysis Society of America and pre-

sented at the annual Access to the Skies Convention. Michael has had the distinct pleasure of working with the Ms. Wheelchair Texas Achievement Program in the past, where he served on the Board, the Planning Committee and emceed the Program for three years. As a Training Facilitator and Flight Attendant for American Airlines, Michael has been inducted into the 1996 and 1999 International Who's Who of Professionals.

### **ALTERNATIVE JUDGE: ELAINE STEFANOWICZ**

Elaine is Ms. Wheelchair America 1997. She has been using a wheelchair since 1982 due to a car accident that severed her spinal cord at the T-7 level. She was the first Washingtonian to ever represent her state in the Ms. Wheelchair America competition and the national title in Warm Springs, Georgia on September 7, 1996. Currently residing in Tacoma, Washington, she is a full-time student and a proud stay-at-home mom for her son, Michael, who turned one year old on April 8, 2000.



## MS. WHEELCHAIR ALABAMA - JANET RATLIFF



Janet lives in Alabaster, Alabama alone with her dog Missy. She became disabled in 1984 when the radiator in an automobile exploded, causing her to receive first, second and third degree burns and three ruptured disks, severing her spinal cord. Janet received her cosmetology degree in 1971. In 1988, she returned to work at the "Silver Scissors Salon" as a receptionist. Janet enjoys bird watching and she says, "Children are my special interest". Janet describes herself as "smiling", "cheerful", "compassionate", "sincere" and "laughter".

**Janet's companion:** Billy Kelly

**Sponsors:** Many special friends

## MS. WHEELCHAIR ALASKA - MARGARET EVANS



Margaret lives in Anchorage, Alaska. She is disabled due to Cerebral Palsy. Margaret is a graduate of the University of Alaska, receiving her Associate of Arts degree in 1992, her Bachelor of Arts in Education in 1995 and a special Education endorsement in 1998. She works as a life skills consultant and teacher working with adults and families touched by disabilities. She is a Golden Key National Honor Society Award recipient to name just one award she has won. Margaret describes herself as "energetic", "enthusiastic", "organized", "compassionate", and "flexible".

**Margaret's companion:** Diane Evans

**Sponsors:** Many friends and family

## MS. WHEELCHAIR CALIFORNIA - NOEMI KING



Noemi currently lives in San Diego, California with her husband Kenneth. She has been disabled since birth due to Muscular Dystrophy. Noemi attended Purdue University from 1991-1994 and received an Associates of Arts degree in Psychology from San Diego Mesa College in 1998. She works as a volunteer coordinator at the Access Center of San Diego Inc. Noemi describes herself as "energetic", "counselor", "sassy", "purple" and "chocolate".

**Noemi's companion:** Kenneth King

**Sponsors:** Californians for Disabilities Rights, Leisure Travel Vans, George's Photo, Access Center, Ricon, Froglegs, Wheelchair Getaways, The V Group, HEAD'N HOME HATS, Creative Mobility & DisABILITY Resources Consulting

## MS. WHEELCHAIR COLORADO - TERI WESTERMAN



Teri lives in Lakewood, Colorado with a friend and three dogs. She has been disabled since birth due to Cerebral Palsy. Teri studied accounting principles at Denver Community College during 1984-1985. She has appeared in many stage productions such as Guys and Dolls, Oklahoma and Fiddler on the Roof. Teri enjoys singing, dancing, crafts, English Equestrian and cooking. She describes herself as "positive", "energetic", "dedicated", "loyal" and "honest".

**Teri's companion:** Betsy Hershey

**Sponsors:** Saturn of Colorado, A Bridal Center, A Theater Night Production Willy and the Po' Boys, Publications Company, Mile High Church Sisters prairie crafts, Sage Real Estate Service, Precision Industrial Contractors, Life Force International, Pathways Home Medical and Villa Italia Mall Management.



## MS. WHEELCHAIR FLORIDA - LAURA NIMZ



Laura lives in Ormond Beach, Florida with her pride and joy, her 10 year old daughter Danielle. She is a T-12 paraplegic due to a car accident, which occurred during the "Storm of the Century" in March of 1993. Laura was a F-15 / F-16 jet engine mechanic in the U.S. Air Force between 1982-1985. She has also worked for the U.S. Postal Service. She is presently a full-time mother and student studying to be a social worker. Laura describes herself as "outgoing", "loving", "determined", "mother" and "short" (sense of humor).

**Laura's companion:** Linda Amato

**Sponsors:** Central Florida Paralyzed Veterans of America and Daytona Speedway

## MS. WHEELCHAIR GEORGIA - JUDITH WINTERS



Judy lives in Augusta, Georgia and has been disabled since 1975 due to an undiagnosed progressive neurological disorder. She attended Armstrong State College from 1970 - 1973 working toward a Psychology degree, which she interrupted to start an Independent Living Center, L.I.F.E. Inc. Judy is currently a free-lance Independent Living Consultant. She runs Galaxy Promotion, a promotion / public relations company and Quixtar, an Internet shopping business. She does a lot of graphic art projects. Judy describes herself as "loyal", "sensitive", "empathetic", "creative" and "determined".

**Judy's companion:** Julia Green

**Sponsors:** Able-disabled Inc., Mr. Byrd, A+ Medical, Walton Rehab, Jack Connell and Ben Harbin

## MS. WHEELCHAIR INDIANA - JEAN A. MCCUTCHAN, PHD



Jean lives in Goshen, Indiana with her husband of 26 years Larry and their two terrific sons Eric (18) and Andrew (11). Jean was diagnosed on her 30th birthday with Multiple Sclerosis. She received her PhD in Counseling Psychology and Special Education from Andrews University in Berrien Spring, MI in 1994. Jean is currently a licensed counseling psychologist and a licensed health provider in Psychology. She specializes with children and families. She also works with the newly diagnosed and chronically ill and disabled. Jean describes herself as "dedicated", "determined", "compassionate", "extroverted" and "educated".

**Jean's companion:** Larry McCutchan

**Sponsors:** Charles Bowen, Banks Corporation, Bowling Laser Center, Frank and Marilyn Martin - Martin Family Foundation, Psychological and Family Consultants and many more.

## MS. WHEELCHAIR IOWA - JAMIE BARKER



Jamie lives in Urbandale, Iowa with a friend. She was born prematurely which caused her disability, Cerebral Palsy. She received a Bachelor of Arts in General Studies with an emphasis in Communications, Humanities and Social Sciences from Central College. Jamie is presently a Customer Service Trainer for Retired Persons Pharmacy, Inc. She hopes to write her autobiography portraying her life with a disability and broaden societal views of people with disabilities. Jamie describes herself as "humorous", "positive", "independent", "motivated" and "open".

**Jamie's companion:** Melody Jackson

**Sponsors:** Access Now, Ms. Wheelchair Iowa, NAPA Auto parts



## MS. WHEELCHAIR KENTUCKY - AMY BURNETT



Amy lives in Lexington, Kentucky with her roommate. In December 1996, she was in automobile accident that caused a spinal cord injury making her a T-5 complete paraplegic. Amy is working towards an English degree at Paducah Community College and Lexington Community College hoping to graduate in 2002. She volunteers at Cardinal Hill Rehabilitation Center, teaching public awareness of disabilities. Amy is very athletic and has received many awards and metal. She describes herself as "determined", "motivating", "creative", fun loving" and "honest".

**Amy's companion:** Desiree Tygart

**Sponsors:** Ron Moberly and family, Robbin Head, Ms. Wheelchair Kentucky 1999, Pat O'Bryant and family, Lea Flanagan and family, Terry's Five and Ten, Edward Erway and family and DuraMed

## MS. WHEELCHAIR MARYLAND - SHERRONE DUNHAMN



Scherrone lives in Chevy Chase, Maryland with her cat, "Sandy". She has been disabled since birth due to Cerebral Palsy. Scherrone was an undergraduate at Rutgers University in 1994 and American University, Masters of Public Administration in 1997. She works for the U.S. Department of Labor as a workforce development specialist where she ensures the Department of Labor programs are accessible for people with disabilities. Scherrone is pursuing Holy Orders as an Episcopal Priest. She describes herself as "humorous", "conscientious", "persistent", "reflective", and "adventurous".

**Sherrone's companion:** Emily Churchman

**Sponsors:** Dateable, Inc.

## MS. WHEELCHAIR MICHIGAN - SONJA SCOTT



Sonja lives in Detroit, Michigan in her own apartment with 24-hour attendant care. In April of 1991, she was injured in a "freak" car accident while wearing a faulty manufactured seatbelt. Sonja graduated from Princeton University's Woodrow Wilson Fellowship Program, where she obtained the funding to pursue her M.P.P. and in 1994 graduated from Purdue University with an Accounting degree. Sonja is the founder and manager of Angelic Home Health Care, Inc. She is also bi-lingual writing and speaking French proficiently. Sonja describes herself as "tenacious", "creative", "caring", "perfectionist" and "open-minded".

**Sonja's companion:** Loretta Scott

**Sponsors:** Angelic Home Health Care Inc., Commissioner Edna Bell, Mr. Wade Briggs, Mrs. Ann Carter and many special friends

## MS. WHEELCHAIR MINNESOTA - JOYCE LYNNE LACEY



Joyce lives in Ashby, Minnesota in her own apartment. She uses a wheelchair due to a spinal cord injury due to an automobile accident in the winter of '95. She graduated with a Bachelor of Arts degree earning highest honors and academic distinction from the University of Minnesota, an Associate of Arts degree from Fergus Falls Community College and an Associate of Arts degree in Bible study from Bible College and seminary. She teaches many workshops and classes including Personality Plus workshop commercial, acting workshops and others. Joyce has won numerous awards such as the International Woman of the Millennium, Outstanding Young Woman of America and the Working Woman Award, to name a few. She describes herself as "inspirational", "motivational", "empathetic", "articulate", and "outgoing / sincere".

**Joyce's companion:** June Delores Lacey

**Sponsors:** MinnComm (an Ameritech Co.), Jackson Medical Equipment, Inc., G.J. Lynne, Northwest Airlines, Wally McCarthy's Oldsmobile, Kallas & MacDonald Attorney at Law, Cinemax / HBO and Friends and Family



## MS. WHEELCHAIR MISSISSIPPI - CINDY MONTGOMERY



Cindy lives in Benton, Mississippi with her parents. She is a T-12 paraplegic due to an automobile accident, which occurred on May 1, 1985. She graduated from Holmes Community College in May of 1986 with an Associate in Arts and Science in Computer Science. Cindy works for the Mississippi Safe Kids Coalition as a program coordinator. In this position, the project is to increase awareness and use of child passenger safety seats. Cindy's hobbies include tennis, basketball, snow skiing, reading and many others. She describes herself as "creative", "friendly", "enthusiastic", "intelligent" and "motivated".

**Cindy's companion:** Sherry Simms

**Sponsors:** Mississippi Methodist Rehabilitation Center, Yazoo County Board of Supervisors, Handicapable Vans, InVacare and National Seating.

## MS. WHEELCHAIR NEBRASKA - CATHY CARVER



Cathy lives alone in Lincoln, Nebraska. She broke her back in August of 1968 causing her to become a T-10 paraplegic when a stack of plywood fell on her. Cathy received her Associate of Arts degree in Substance Abuse Counseling in 1993 from Iowa Western Community College and her Bachelor of Science degree in Elementary Education in 1997 from University of Nebraska - Lincoln. Cathy is funding coordinator for the State of Nebraska, Assistive Technology Partnership. She is also program coordinator for the Nebraska Childfind. Cathy has won many awards for her artwork (painting and sculpting). She describes herself as "tenacious", "zealous", "resourceful", "compassionate" and "humorous".

**Cathy's companion:** Shelley Willits

**Sponsors:** Office Depot, A Page in Time, Schrier Ford, Dr. Michael Dalton, Dillards Department Store, Pickering Boe, Nebraska Ellas and Madonna Rehabilitation Hospital

## MS. WHEELCHAIR NEW JERSEY - JENNIFER ANN BRYDON



Jennifer lives in Glen Ridge, New Jersey alone in her one bedroom apartment that she adores. At the age of 2 she developed a chronic disease called Juvenile Rheumatoid Arthritis. Jennifer hopes one day to attend college and receive her degree in Psychology. She is currently working at Burrelle's Information Services in Livingston, New Jersey where she just received a promotion to web-site research analyst. Jennifer received the Essex County Outstanding Disabled Citizen Award signed by County Executive, James Treffinger and the State of New Jersey. She describes herself as "independent", "strategic", "aggressive", "resourceful" and "articulate".

**Jennifer's companion:** Karen Bobowski

**Sponsors:** Ms. Wheelchair New Jersey Pageant

## MS. WHEELCHAIR NEW YORK - KRIS A. PIAZZA



Kris lives in Buffalo, New York in her own apartment. She is a cervical 5 - quadriplegic caused by a spinal cord injury sustained in 1980 at the age of twelve after falling from a pool deck. She graduated in 1992 from Medaille College summa cum laude with a Bachelor of Arts and Science degree in Media Communications. Kris works at Independent Health, as a consultant on an as needed basis to give stress management workshops. She also works at Kaleida Health Systems where she is a director for the Erie County Chapter of THINK FIRST National Injury Prevention Programs. Kris describes herself as "assertive", "intelligent", "kind-hearted", "intuitive" and "interested".

**Kris' companion:** Mattie Thorton

**Sponsors:** Kaleida Health, "WE CARE" Transportation, Inc., Adelphia Cable, Rich Products, Royal Printing, Fontana's Banquet Center, The Western New York Community and The Western New York Business Community



## MS. WHEELCHAIR NORTH CAROLINA - LORRAINE MITCHELL



Lorraine lives in Brevard, North Carolina by herself. She is a bi-lateral amputee of both legs (right - aka, left - bka) due to a boating accident in May of 1997. She attended Asheville Buncombe Technical College from September 1980 to May 1982. She received her Activity Director Certification through the National Certification Counsel of Activity Professional in 1996. Lorraine is an activity director / admissions coordinator for a 167 bed nursing and rehabilitation facility. She was selected by and appeared on "The Oprah Winfrey Show" as one of eight people featured in "You Do a Great Job" Salute in October of 1998. Lorraine describes herself as "vivacious", "adventurous", "perceptive", "euphoric" and "zealous".

**Lorraine's companion:** Lee Morgan

**Sponsors:** Mariner Post Acute Network - District 1, Dillards, J.C. Penney, Brian Center Health and Rehabilitation / Brevard and Ms. Wheelchair North Carolina Alumni

## MS. WHEELCHAIR OHIO - KARA VARGO



Kara lives in Streetsboro, Ohio where she shares an apartment with her sister. She has been disabled since birth due to Spina Bifide. She attended Maplewood Joint Vocational School in 1996 and is currently attending Kent State University majoring in Public Relations. Kara is a receptionist at the Hattie Larlham Foundation in Mantua, Ohio. She received the Future Secretary of the Year Award by the Professional Secretaries International as well as many other awards. Kara describes herself as "unselfish", "caring", "friendly", "motivated" and "hardworking".

**Kara's companion:** Peg Vargo

**Sponsors:** Mr. & Mrs. Ron Coleman, Sr., Mr. & Mrs. Steve Legat, Mr. & Mrs. Tim Bennett, Mr. & Mrs. Todd Luckett and Michele Slokar, County of Summit Board of Mental Retardation and Developmental Disabilities, The Weaver Group Foundation and many other friends and family

## MS. WHEELCHAIR OKLAHOMA - JACQUELINE WOOMMAVOVAH



Jackie lives in Norman, Oklahoma in her own place. In September 1983, while driving home late from a friend's house, she fell asleep at the wheel and hit a guardrail and was paralyzed and is classified as a C5-6 quadriplegic. In August of 1995 she received a Paralegal Program Certificate from the University of Oklahoma and has worked for Legal Aid of Western Oklahoma. Jackie's advocacies include protesting at the state capital of Oklahoma against the passage of a bill that would have eliminated the Provider Program in Oklahoma forcing many disabled citizens into nursing homes. Jackie describes herself as "stubborn", "strong", "confident", "positive", and "beautiful inside and out".

**Jackie's companion:** Charlene Vargas

**Sponsors:** Mike Nicholason, Harvey A. Davis, Flood Street Properties, Krittenbrink Architecture, Carl A. Davis, David and Lisa Porter, McFarlin United Methodist Church

## MS. WHEELCHAIR PENNSYLVANIA - KARA AIELLO



Kara lives with her parents in Blue Bell, Pennsylvania. She has been disabled since birth due to Osteogenesis imperfecta, better known as brittle bones. She has a two-year Associates of Human Services degree from Montgomery Community College. She also has a Bachelor of Arts in Psychology from Gwynedd Mercy College. Kara is a recreational therapist for older adult residents and for the last nine years she has been counseling. She is also a New Choice Program sales representative. She describes herself as "spiritual", "sensual", "humorous", "courageous" and "empathetic".

**Kara's companion:** Kathleen Salemno

**Sponsors:** Kardo Institute of Performing Arts, Gwynedd Mercy College, Arlene Bradford, Kathryn Fetterly, Russ and Sylvia Aiello, Carey Levitt, Lyons Club, Janette Steiness, Sebby Aiello, May Fair in Allentown



## MS. WHEELCHAIR SOUTH CAROLINA - NICKI ALLISON ARD



Nicki lives in Pamplico, South Carolina with, in her own words, "the greatest person in the whole wide world", her Mom. Her mother is ill and Nicki is providing care for her, which she feels is a returned favor for the years of TLC that she received. Nicki received a Bachelor of Arts in Television Broadcasting from Francis Marion University in 1995 with a double minor in French and English (specializing in creative writing). She is a concert vocalist and motivational speaker. In March of 1999, Nicki released her second album entitled, "Walk with Me", which charted at number 5 on the national charts. She describes herself as "determined", "motivated", "outgoing", "compassionate" and "dependable".

**Nicki's companion:** Renee Walsh

**Sponsors:** Many friends and family

## MS. WHEELCHAIR SOUTH DAKOTA - TRACY SCHRAMM



Tracy lives at home with her parents in Yankton, South Dakota. She was born with Cerebral Palsy. Tracy is currently a senior at Southwest State University in Marshall, Minnesota working on a double major: a Bachelor of Science in Computer Science and a Bachelor of Arts in Spanish. She is on the Dean's list with a G.P.A. of 3.66. Her long-term goal is to assist people with disabilities in obtaining and learning how to use assistive technology. Tracy describes herself as "outgoing", "energetic", "optimistic", "hard working" and "caring".

**Tracy's companion:** Angie Schramm

**Sponsors:** Many friends and family

## MS. WHEELCHAIR TENNESSEE - SOFIA MANESCHI



Sofia lives in Nashville, Tennessee with her parents. She was diagnosed with Multiple Sclerosis in October 1995. Sofia graduated from Tufts University in 1997 with a Bachelor of Arts degree in Psychology. She works for the Center for Independent Living as a VISTA (Volunteer In Service To America) worker. Her duties include writing great proposals and serving as a media contact person. Other work experiences include being a patron and researching various artists. Sofia describes herself as "creative", "sensitive", "insightful", "considerate" and "responsible".

**Sofia's companion:** Helga Maneschi

**Sponsors:** Mark Phillip Singer, Brian and Amy Brown, Dr. Sriram Subram-Aniam, Zo-Zo Research Inc., Carrie B. Padgett Pangaea, Zeitgeist Art Gallery, National MS Society, The Maneschi Family, Lois Knight, Karola Kuhnack

## MS. WHEELCHAIR TEXAS - DONNA STATHAM



Donna lives in St. Hedwig, Texas with her husband, Danny. She has had 7 back surgeries (L4 to S1 fusion) and severe neuropathic nerve damage. She was injured on her honeymoon in Cozumel, Mexico when Hurricane "Roxanne" hit on October 9, 1995. She began using a wheelchair in August 1997. Donna attended San Antonio College from 1983-1985 and SST Travel Agent School in 1991. She presently works for Citibank in customer service speaking to 200-400 customers a day on the phone about banking information. She has worked there 7 years. Donna says she wants "to be the best person I can be in every aspect of life". She describes herself as "generous", "determined", "honest", "perseverant" and "optimistic".

**Donna's companion:** Danny Statham

**Sponsors:** Gerald and Dawn Vrana, Red McCombs Inc., Danny Statham, Dave and Lori Statham, Para Driving Aids, Texas Agri Food Masters, Sunrise (Quickie) Wheelchairs, Scooter Store, TefTec Corporation, Anthony Ortiz-Helix



## MS. WHEELCHAIR WASHINGTON - GWEN EVELYN NOWAK



Gwen lives in Tacoma, Washington with her fiancé. She has been developmentally disabled since birth. She obtained her Social and Mental Associates degree in 1997 and is still in school at Pierce College. Gwen is a homemaker and an Avon representative. Her goals for the future are to become a child protective service worker and to bring awareness to the public about barriers and solutions to ongoing issues. Gwen describes herself as "ambitious", "independent", "kind", "understanding" and "resolver".

**Gwen's companion:** Oriana Kaha

**Sponsors:** Lakewood Elks Club, Elaine Stefanowicz, Jaci Sweet, Lisa Doolittle - Avon Representative, Olympic Pharmacy, Pacific Northwest Shops, A-2 Arts, Ram Restaurant, Good Samaritan Hospital, Friends and Family

## MS. WHEELCHAIR WISCONSIN - JENNIFER ADDIS



Jennifer lives in Muskego, Wisconsin with her fiancé, Harry. She has been disabled since March of 1997 due to a spinal cord injury sustained in a car accident. She is currently attending the Milwaukee Area Technical College working towards her Psychology degree. Jennifer is presently employed at the Muskego Nursing Home as a computer consultant handling all of their billing, accounts payable, accounts receivable, advertisement and typing letters for the administration as well as assisting the director of the nursing home and recreational therapist with computer assistance. One of Jennifer's main goals is to help raise public awareness on many issues including wheelchair accessibility. Jennifer describes herself as "intelligent", "ambitious", "outgoing", "motivational" and "inspirational".

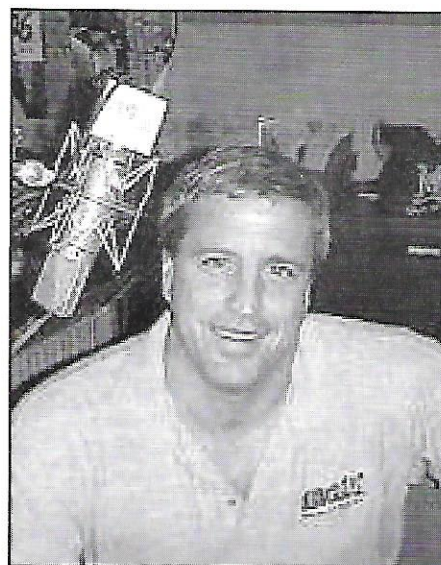
**Jennifer's companion:** Harold Swanto

**Sponsors:** Muskego Nursing Home, Contracting and Material, Milwaukee Western Bank, Arby Construction Inc., M&I Bank, Westhill Rehab, Kettle Moraine H.O.G. Chapter, Hal's Harley Davidson, House of Harley Davidson, Conrad Schmitt Studios



## KARAOKE NIGHT WITH BILL MURPHY

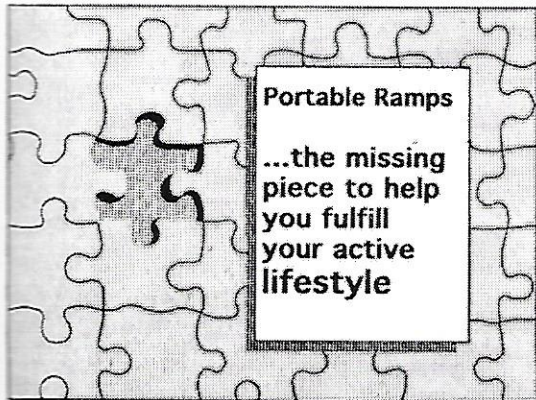
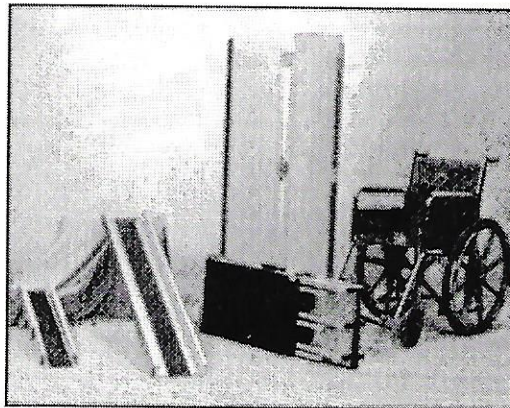
For the past four years Bill Murphy has been a Midday Air personality for BIG 106, South Florida's classic rock radio station. Bill previously worked on radio in Dallas, Texas. Throughout the 80's he worked for WGTR and WSHE radio stations. Bill also does work for the Florida Panthers in their production department. He has had several television appearances including WPBT and WLRN hosting concerts for their pledge drives. Bill lives in Plantation, Florida and in his own words, he is "The most single guy in Broward County".





# Portable Entry Systems

*Portable Ramps for  
all applications*



Portable Ramps

...the missing  
piece to help  
you fulfill  
your active  
lifestyle

Portable Entry Systems

PO Box 100

Camden MI, 49232

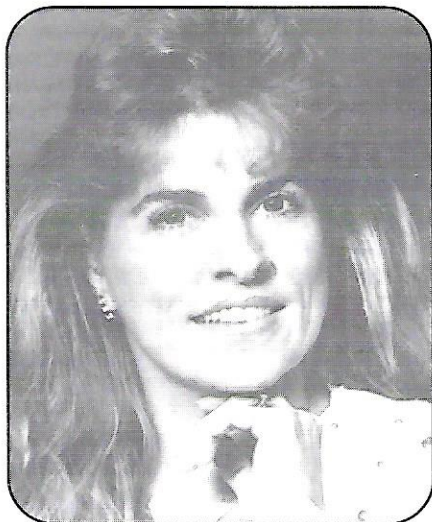
Phone: (517) 368-5583

Toll Free: 800-286-1181

Fax: (517) 368-5109

E-Mail: [info@portableentrysystems.com](mailto:info@portableentrysystems.com)

"The staff at Portable Entry Systems would like to wish all of the contestants good luck and have fun!"



MISTRESS OF CEREMONIES - FRIDAY NIGHT

## *Terri Kace*

*Mrs. Wheelchair Florida 1991 & 1992*

Terri Kacie was born and raised in West Central Florida. She is married and has two grown children. She was Ms. Wheelchair Florida 1991 and 1992. Her hobbies include counted cross-stitch, rubber stamping, reading, camping, and backpacking. She has been the owner of K.C. Enterprises, a medical transcription company, since 1985. She has been the national spokesmodel for Ford Motor Company's Mobility Motoring Program since 1992.

MISTRESS OF CEREMONIES - SATURDAY NIGHT

## *Audrey Lorence*

*Mrs. Broward County International 2000*

Audrey is very busy in committing much of her time to her platform - volunteerism throughout Broward County. She is involved with the American Heart Association Heart Ball (committee member), the American Cancer Society, numerous AIDS benefits, Pet AID, the American International Relief Aid, the Broward County Chamber of Commerce as well as other charity events. She has had the honor of promoting Broward County to numerous celebrities including Barbara Eden, James Earl Jones, Danny Glover, Judge Judy Sheidlen as well as other top officials throughout the county. Besides her busy schedule, Audrey resides in Coral Springs with the three favorite men in her life, her husband Chris and two little boys, Nicholas and Corey.





# **The Ms. Wheelchair America Program**

*August 12, 2000*

## **"Live, Love & Laugh"**

Welcome and Opening Remarks ..... Rev. Lisa Muscarella  
National Anthem ..... Nicole Ortiz  
Introduction of Mistress of Ceremonies ..... Audrey Lorence, Mrs. Broward County

Live, Laugh & Love / Having a Party ..... Contestants with their Escorts

Introduction of Judges and Judging Criteria ..... Audrey Lorence

Entertainment - Nicole Ortiz

Introduction of MWA Board of Directors ..... Audrey Lorence  
A Greeting from the Executive Director ..... Barbara Cramer  
Introduction of Contestants ..... Audrey Lorence

Fun Entertainment - Terri Kace, Ms. Wheelchair Florida 1991

Contestants Line-up on Stage for Awards ..... Theme Song Plays  
Presentation of Ms. Congeniality and Ms. Achievement ..... Audrey Lorence  
Announcement of Ten Finalists ..... Audrey Lorence

Entertainment - Ileana Cruz-Martinez, Ms. Wheelchair Florida 1996

Questions to Finalists ..... Rev. Ron Muscarella & Audrey Lorence  
Dismiss Judges for Final Decision ..... Audrey Lorence

"People's Choice", "Best State Display", "Ms. Smiles" Awards ..... Audrey Lorence

Recognize Sponsors, Introduce State Boards & Volunteers ..... Rev. Lisa Muscarella

Farewell - Ms. Wheelchair America 2000 ..... Tracy Charlton-O'Connor

Announcement of Second and First Runner-up ..... Audrey Lorence

Crowning of Ms. Wheelchair America 2001

Closing ..... Entertainment and Remarks

*All Music and Sound provided by Sean Paul Powell*

**The Ms. Wheelchair Florida Pageant, Inc.  
Board of Directors**

**Wish to say  
"Thank You!"  
To the sponsors of  
Ms. Wheelchair America Program 2001**

The City of Ft. Lauderdale, FL	American Airlines
Ford Mobility Motoring - Michigan, FL	Florida Power & Light Company - Miami, FL
Southern Wine & Spirits - Miami, FL	Marriott Marina - Ft. Lauderdale, FL
Brunswick Margate Lanes - Margate, FL	Dr & Mrs. John Koors - Stuart, FL
Sharp Marketing - Ft. Lauderdale, FL	A House of Trophies - Ft. Lauderdale, FL
O.Y. Thomas, Photo - New Port Richey, FL	Jensen's Liquor Store, Vicente Cruz - Miami, FL
Jensen's Liquor Store, Eddie Cruz - Miami, FL	Mercedes Cruz - Miami, FL
Doctor's Medical Rentals - Miami, FL	Buddy's Holiday Mobility - Fort Pierce, FL
Mr. Formal, Eric - Ft. Lauderdale, FL	Bill & Pauline Daugherty - Ft. Lauderdale, FL
Paramount Food Services - Pompano Bch, FL	Bravo Italiano Ristorante - Ft. Lauderdale, FL
Sean Paul Powell - Ft. Lauderdale, FL	Rick & Roxanne Shaw - Orange Park, FL
Brown's Chicken - Ft. Lauderdale, FL	Mary Kay Rep. Laurie Gutches - Sunrise, FL
Bacardi USA, Inc. - Miramar, FL	Fred & Lori Goulette - Ft. Lauderdale, FL
National Distributing Co. - Deerfield Bch, FL	Premier Beverage Company - Miramar, FL
Bob Edmonds - Orlando, FL	Keith A. Hoover, D.D.S. - Hudson, OH
Charles A. Beutel, D.V.M. Inc.	Ken & Jill Calkins - Garrettsville, OH
Thomas & Ida Lorini - Willowick, OH	Marc & Kathy Addis - Hancock, WI
Wanda K. Weber & Letha - Dayton, OH	Olympic Awards, Dean Eschliman -Hudson, OH
Howard & Dianna Warren - Canton, OH	Lena Smith - Canton, OH
Jonathon & Elisa Ross - Orange Village, OH	EDM pro.com, Inc. Employees - Miami, FL
David Bates, Duct Test./HVAC Progs. - Miami, FL	Buildsmart Progs. - Miguel Lasaga - Miami, FL
Portable Entry Systems - Camden, MI	Radisson Bahia Mar Resort - Ft. Lauderdale, FL
Able Access of Florida - Margate, FL	Leni Ulrich, Therapy Dir. Broward Easter Seals
Coral Ridge Yacht Club - Ft. Lauderdale, FL	TapLink E.C.U. Solutions - Deerfield Bch, FL
Mobility Concepts, Inc. - Hallandale, FL	Wellness Plus, Inc. - Pompano Beach, FL

Downtown Digital Printing - Ft. Lauderdale, FL

***"May God richly bless you and your business!!"***

**THANK YOU!!**





# MUSKEGO NURSING HOME

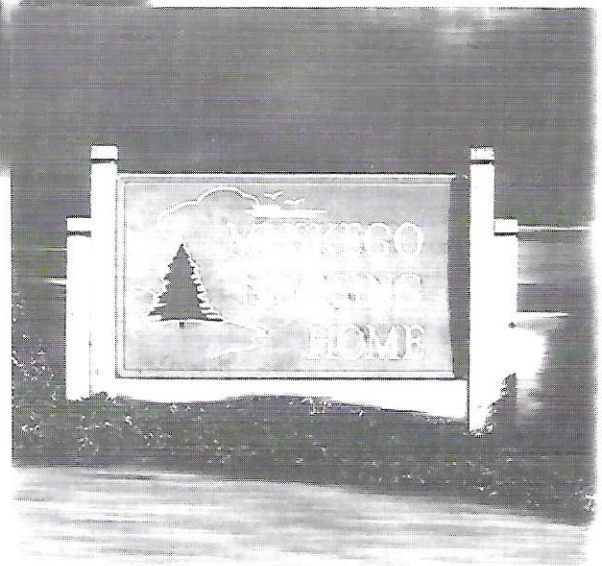
*Home Like Atmosphere  
on Beautiful Lake Muskego*

*In The Company  
Of Companions*



## *Our Heritage....*

*We personally invite you and your loved ones to visit our warm, family owned facility. We are one of the few Nursing Homes that are privately owned and operated since 1962 and one of the states only homes with three generations of experience. One of our goals here at Muskego Nursing Home is to reassure all family members that their loved ones will receive quality medical care, a safe living environment and an opportunity to continue their lives with true meaning.*

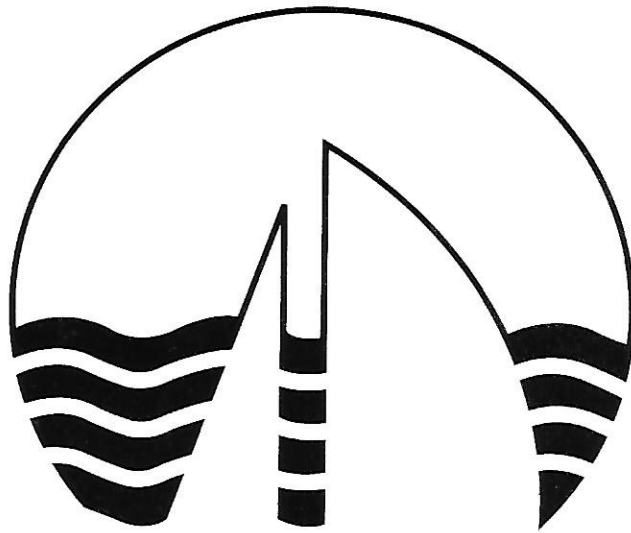


*With our experience we understand the difficulty involved with placing a loved one in a Nursing Home. Our convenient location allows family and friends extra time to visit with their loved ones and enjoy their new experience. Muskego Nursing Home was designed to provide comfort, safety and a warm, home-like atmosphere for the elderly and convalescent.*

*Muskego Nursing Home  
S77 W18690 Janesville Road  
Muskego, WI 53150*

*(262) 679-0246  
Fax (262) 679-9717*





---

**FORT LAUDERDALE MARINA**

**Marriott®**

1881 Southeast 17th Street, Fort Lauderdale, Florida 33316  
(954) 463-4000 Fax: (954) 527 6705





**MC MOBILITY  
SYSTEMS, INC.**

*Your Key To Personal Mobility*

**OHIO'S LARGEST INVENTORY OF LOWERED FLOOR MINI VANS**

*Compare Before You Buy*

**\* BRAUN ENTERTAINS**

**\* RICON ACTIVANS**

**\* IMS RAMPVANS**

**6185-G Huntley Rd.**

**Columbus, Ohio 43229**

**1-800-834-8301**

**7588 Tyler Blvd.**

**Mentor, Ohio 44060**

**1-800-951-6238**

**LARGE SELECTION OF PREOWNED VANS AND EQUIPMENT**

- |                    |                      |
|--------------------|----------------------|
| * HAND CONTROLS    | * STAIRWAY LIFTS     |
| * PEDAL EXTENSIONS | * ELECTRIC SCOOTERS  |
| * WHEELCHAIR LIFTS | * PORCH ELEVATORS    |
| * TRANSFER SEATS   | * POWER DOOR OPENERS |
| * CARTOP CARRIERS  | * RAMPS              |
| * TRANSPORTERS     | * SCOOTER LIFTS      |
| * BOAT LIFTS       | * MOTORHOME LIFTS    |

**SALES ▼ SERVICE ▼ INSTALLATION ▼ RENTALS**



**IMS**

*Let us show you what to do  
anywhere you want to go*

**RICON**

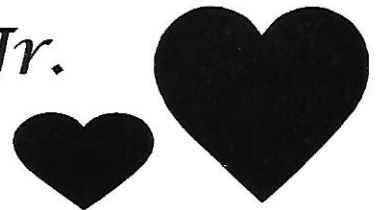
*Innovation in Mobility*



*Jenny Addis*  
*Ms. Wheelchair Wisconsin*



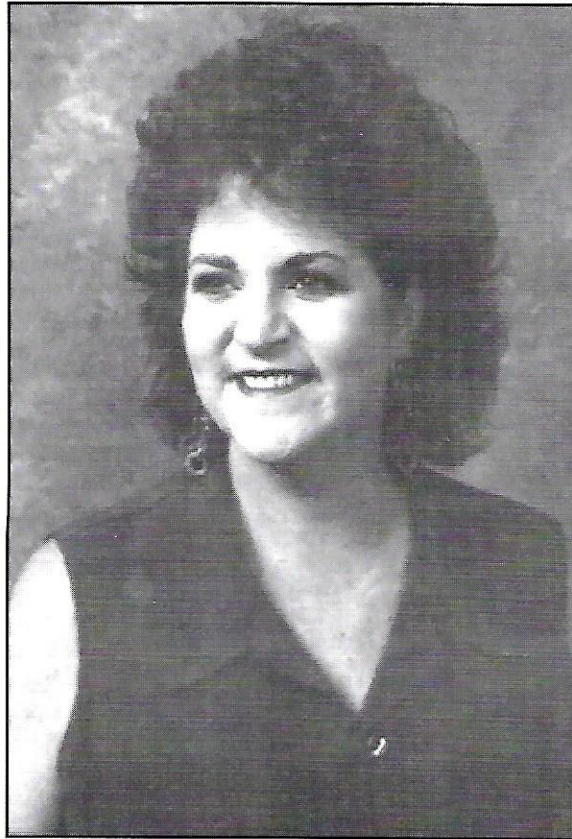
*Wishing you the Best of Luck,  
May all your Dreams come True!!  
Loving you with all our Heart,  
Harry III and Harry Jr.*





# ***LORRAINE MITCHELL***

***MS. WHEELCHAIR NORTH CAROLINA***



***WE CELEBRATE YOUR SUCCESS AND  
AND APPLAUD YOUR SPIRIT!***

***WITH MUCH LOVE AND ADMIRATION FROM  
YOUR FRIENDS AT***



*and*



***SPECIAL THANKS TO DILLIARD'S AND J.C. PENNY***





# The SCOOTER Store

Proud Sponsor of: Ms. Wheelchair America

Check Out Our  
**FREE SCOOTER GUARANTEE™**

It we pre-qualify you for a Medicare claim and your claim is denied, we'll give you your new scooter **FREE!**  
You won't owe a single penny. Period!

*Call Toll-Free Today*  
to see if you pre-qualify and let us handle all  
of your paperwork. There is no cost or obligation:

## 800.723.4535

Ask for Operator 12



The SCOOTER Store Visit our Website: [www.thescooterstore.com](http://www.thescooterstore.com)

\*Claims may be subject to several claim reviews and appeals.

©2000 The SCOOTER Store, Inc.



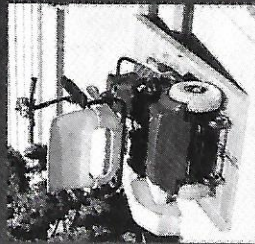
# **EZ-ACCESS**

*The Leading Name in Portable Ramps*

## **SUITCASE RAMP**

**Available in 2-, 3-, 4-, 5-, & 6-Foot Lengths**

The single-fold ramp for scooters and all wheelchair types. Designed to bridge the gap over steps, curbs, and raised landings. The 5' & 6' may be used with most minivans.



## **TRIFOLD RAMP**

**Available in 5-, 6-, 7-, 8-, & 10-Foot Lengths**

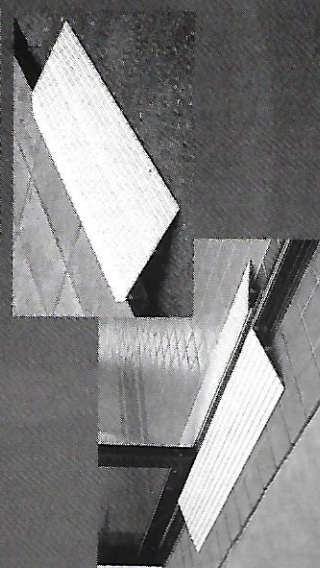
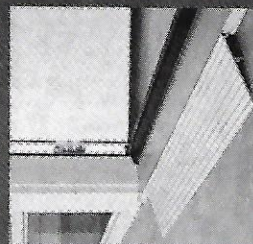
The TRIFOLD ramp offers the length required for wheelchairs and scooters to access minivans, full-size vans, steps, and raised landings with ease.



## **THRESHOLD RAMP**

**Available in 1-, 1 1/2-, 2-, & 3-Inch Heights**

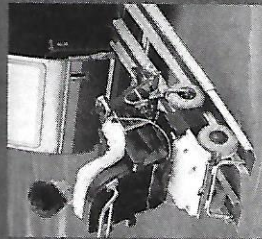
For scooters and wheelchairs. The EZ-ACCESS™ THRESHOLD ramp is a lightweight, yet durable modular ramp designed for doorways, sliding glass doors, and raised landings.



## **TRACK RAMP**

**Available in 5-, 7-, & 10-Foot Lengths**

Designed for manual and/or power wheelchairs. Two telescopic rails each extend to be used on steps, vans, or curbs.



## **LIGHTWEIGHT PANEL RAMP**

**Available in 8-Foot Length**

The EZ-ACCESS™ R3000 features side rails and corner panels that easily combine to create a sturdy, 8-foot ramp. Ideal for use with scooters and all wheelchair types.



## **ROLLUP RAMP**

**Available in 3- & 5-Foot Lengths**

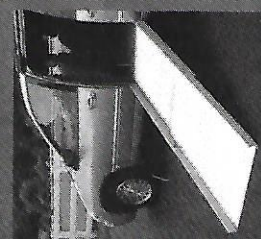
For scooters and all wheelchair types. Designed to bridge the gap over steps, curbs, and raised landings. Patented rollup design allows compact storage.



## **TELESCOPING ROLLUP RAMP**

**Available in 8-Foot Length**

The multi-purpose ramp designed for scooters and all wheelchair types. This unique ramp makes mini and full-size vans accessible. Also makes a perfect semi-permanent ramp. Telescopic design allows ramp to be used at various lengths from 4 1/2' to 8'.



# **EZ-ACCESS™ Incline Chart**

*Choose the right ramp for the right application*

34"	32"	30"	28"	26"	24"	22"	20"	18"	16"	14"	12"	10"	8"	6"	5"	4"	3"
16.5"	15.5"	14.5"		17.0"	13.5"	12.5"	11.5"	10.5"	9.5"	8.5"	7.7"	6.7"	5.7"	4.8"	4.3"	3.8"	3.3"
				15.7"	13.5"	12.0"	10.5"	9.5"	8.5"	7.7"	6.7"	5.7"	4.8"	4.3"	3.8"	3.3"	2.8"
					16.6"	14.5"	13.2"	12.0"	10.8"	9.6"	8.4"	7.2"	6.0"	5.4"	4.8"	4.2"	3.6"
					15.2"	13.2"	12.0"	10.8"	9.6"	8.4"	7.2"	6.0"	5.4"	4.8"	4.2"	3.6"	3.0"
					16.1"	13.8"	12.0"	10.8"	9.6"	8.4"	7.2"	6.0"	5.4"	4.8"	4.2"	3.6"	3.0"
					14.5"	12.4"	10.8"	9.6"	8.4"	7.2"	6.0"	4.8"	4.2"	3.6"	3.0"	2.4"	1.9"
					15.5"	12.8"	11.0"	9.6"	8.4"	7.2"	6.0"	4.8"	4.2"	3.6"	3.0"	2.4"	1.8"
					13.5"	11.2"	9.6"	8.4"	7.2"	6.0"	4.8"	4.2"	3.6"	3.0"	2.4"	1.8"	1.4"
					11.5"	9.6"	8.2"	7.2"	6.0"	4.8"	4.2"	3.6"	3.0"	2.4"	1.8"	1.4"	1.0"
					9.6"	8.0"	6.8"	6.0"	5.4"	4.8"	4.2"	3.6"	3.0"	2.4"	1.8"	1.4"	1.0"
					8.6"	7.2"	6.2"	5.4"	4.8"	4.2"	3.6"	3.0"	2.4"	1.8"	1.4"	1.0"	0.8"
					7.2"	6.4"	5.6"	4.8"	4.2"	3.6"	3.0"	2.4"	1.8"	1.4"	1.0"	0.8"	0.7"
					6.4"	5.6"	4.8"	4.2"	3.6"	3.0"	2.4"	1.8"	1.4"	1.0"	0.8"	0.7"	0.6"
					5.6"	4.8"	4.1"	3.6"	3.0"	2.4"	1.8"	1.4"	1.0"	0.8"	0.7"	0.6"	0.5"
					4.8"	4.1"	3.6"	3.0"	2.4"	1.8"	1.4"	1.0"	0.8"	0.7"	0.6"	0.5"	0.4"
					4.1"	3.6"	3.0"	2.4"	1.8"	1.4"	1.0"	0.8"	0.7"	0.6"	0.5"	0.4"	0.3"
					3.6"	3.0"	2.4"	1.8"	1.4"	1.0"	0.8"	0.7"	0.6"	0.5"	0.4"	0.3"	0.2"
					3.0"	2.4"	1.8"	1.4"	1.0"	0.8"	0.7"	0.6"	0.5"	0.4"	0.3"	0.2"	0.1"
					2.4"	1.8"	1.4"	1.0"	0.8"	0.7"	0.6"	0.5"	0.4"	0.3"	0.2"	0.1"	0.0"
					1.8"	1.4"	1.0"	0.8"	0.7"	0.6"	0.5"	0.4"	0.3"	0.2"	0.1"	0.0"	0.0"
					1.4"	1.0"	0.8"	0.7"	0.6"	0.5"	0.4"	0.3"	0.2"	0.1"	0.0"	0.0"	0.0"
					1.0"	0.8"	0.7"	0.6"	0.5"	0.4"	0.3"	0.2"	0.1"	0.0"	0.0"	0.0"	0.0"
					0.8"	0.7"	0.6"	0.5"	0.4"	0.3"	0.2"	0.1"	0.0"	0.0"	0.0"	0.0"	0.0"
					0.7"	0.6"	0.5"	0.4"	0.3"	0.2"	0.1"	0.0"	0.0"	0.0"	0.0"	0.0"	0.0"
					0.6"	0.5"	0.4"	0.3"	0.2"	0.1"	0.0"	0.0"	0.0"	0.0"	0.0"	0.0"	0.0"
					0.5"	0.4"	0.3"	0.2"	0.1"	0.0"	0.0"	0.0"	0.0"	0.0"	0.0"	0.0"	0.0"
					0.4"	0.3"	0.2"	0.1"	0.0"	0.0"	0.0"	0.0"	0.0"	0.0"	0.0"	0.0"	0.0"
					0.3"	0.2"	0.1"	0.0"	0.0"	0.0"	0.0"	0.0"	0.0"	0.0"	0.0"	0.0"	0.0"
					0.2"	0.1"	0.0"	0.0"	0.0"	0.0"	0.0"	0.0"	0.0"	0.0"	0.0"	0.0"	0.0"
					0.1"	0.0"	0.0"	0.0"	0.0"	0.0"	0.0"	0.0"	0.0"	0.0"	0.0"	0.0"	0.0"
					0.0"	0.0"	0.0"	0.0"	0.0"	0.0"	0.0"	0.0"	0.0"	0.0"	0.0"	0.0"	0.0"



# ALASKA RAILROAD CORPORATION



**Scott Banks**  
Public Affairs Officer

327 W. Ship Creek Avenue, Anchorage, Alaska 99501  
Mailing Address: P.O. Box 107500, Anchorage, Alaska 99510-7500  
Office: (907) 265-2695, Fax: (907) 265-2312  
e-mail: bankss@akrr.com



(907) 561-1911, Ext. 105  
FAX (907) 561-4650  
E-mail: tshackle@avianc.com

**TOM SHACKLE**  
Director of Sales & Marketing

5430 Fairbanks St., #7 • Anchorage, Alaska 99518

For more information or to order a free visitors guide:



## Anchorage Convention & Visitors Bureau

524 W. Fourth Avenue  
Anchorage, Alaska 99501-2212  
Phone: (907) 276-4118 • Fax (907) 278-5559  
Toll free: (800) 478-1255  
www.anchorage.net • e-mail: info@anchorage.net

**PSFA**  
PACIFIC SEAFOOD  
PROCESSORS ASSOCIATION

**STEPHANIE MADSEN**  
Vice President

213 Third Street, Suite 112 • Juneau, Alaska 99801  
Ph: (907) 586-6366 Fax: (907) 586-4618  
e-mail: smadsen@pspafish.net



**Andrea Wahry**  
PRESIDENT

(907) 561-8088  
5650 B St., Anchorage, AK 99518  
FAX (907) 561-8389  
info@trapperscreek.com  
http://www.trapperscreek.com

*Chak*



Experience  
the world's  
largest  
CHOCOLATE  
WATERFALL

Watch our  
candies, jams  
and jellies  
being made



**Ross Blakeney**  
Northwest Medical  
3701 East Tudor Rd. Ste 101  
Anchorage, Alaska  
(907) 563-0073

## Al & Christal Vanhuff Fat Alberts Hunting and Fishing Lodge Beluga, Alaska

**Rainbow Wheels**  
**Bob Minto**  
P.O. Box 194  
Hillsdale, Michigan 49242

**Vernon Evans**  
American Home Patient  
1012 Savage Ct.  
Longwood, Florida 32750  
(800) 876-7696



Alaska State Legislature

**Con Bunde**  
REPRESENTATIVE

SESSION:  
STATE CAPITOL  
JUNEAU, ALASKA 99801-1182  
(907) 465-4843 (800) 892-4843

INTERIM:  
716 W. FOURTH AVE.  
ANCHORAGE, AK 99501-2133  
(907) 269-0181

E-MAIL Representative Con\_Bunde@legis.state.ak.us  
WEB SITE http://www.akrepublicans.org/Bunde.htm

**Seams Right (Sewing Creations)**  
**By Donna Corneille (907) 745-7717**

**MARIAHS**  
&  
**Suzanne Moore**



**Compliments**  
Hair Salon  
"Independence Park Shopping Center"

Krysia Price  
Stylist

2101 Abbott, Suite 2  
Anchorage, AK 99507  
(907) 349-7722



**ESPECIALLY FOR YOU**  
**FASHIONS BY**  
**DIANE RASAR**

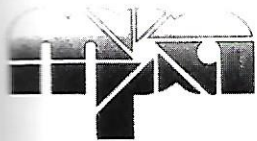
**WEDDING AND PROM GOWNS**  
**DESIGNER ORIGINALS**  
**SOME READY MADE FASHIONS**

**CALL FOR AN APPOINTMENT 345-1288**  
**7301 SOUTH PARK DRIVE, ANCHORAGE, ALASKA**



Mary J. Rohlfing

ANCHORAGE ELKS LODGE NO. 1351, BPOE



MPA-Post • E Street Theatre  
Encore • Alaska Video Publishing

Buzz Rohlfing  
President

*Media Production Associates*

Media Production Associates  
315 E Street, Anchorage, Alaska, 99501  
Telephone: 907-277-4444 FAX: 277-4447 E-mail: mpa@alaska.net

ANCHORAGE TRAVEL BUREAU



ROBERT J. FRASCATI, JR.  
President  
(907) 278-2581

523 W. 3rd Avenue, Anchorage, Alaska 99501

*Anchorage East Rotary Club*

*Mary J. & Buzz Rohlfing  
Jack Frost*

*Paul McGuire  
Robert V. Christal  
Frank E. Nyman  
Milton Byrd  
Carolyn E. Jones  
Joyce T. Murphy  
James L. Palmateer  
Kelly R. Holst-Palmateer  
Maxine L. Froemling  
Doran O. Powell  
Anita M. Powell  
Bobbi Ramos Olson  
Lynn R. Hammond III  
Daniel L. Middaugh  
Pamela Middaugh  
Dawn M. Lowrie  
Okana A. Bartholomew  
James D. Olson  
Sarah A. Williams*

BERNIE'S PHARMACY, INC.

562-2138  
4045 LAKE OTIS PARKWAY, SUITE 204  
ANCHORAGE, ALASKA 99508

Rob Whitmore  
Graphic Designs  
(907) 276-7201



*Friends & Neighbors of  
Tim Kelly*

Anchorage Photos  
911 W. 29th Ave.  
Anchorage, Alaska  
(907) 561-5568



Timothy M. Sullivan

*Anchorage Midtown Rotary Club*

Bertha Shimoe  
Jim C. Beck  
Karla Rathbun  
Don J. Brandon  
Gale M. Sinnott  
  
Governor Tony Knowles  
Mayor Rick Mystrom

Alaska Welcomes You, Inc.  
Accessible Alaskan Adventures  
P.O. Box 91333  
Anchorage, Alaska 99509-1333



Alaska Ear Nose & Throat, Inc.  
Jerome List, DDS, MD

English, Russian and Spanish Spoken

(907) 261-3096 3340 Providence Drive  
Office Hours Suite 357  
By Appointment Anchorage, AK 99508



Tram Chu, M.D.  
Hari Regen, M.D., M.S.  
Joseph R. Lestina, M.D.

Dorothy Shearn, M.D.  
Charles M. Herndon, M.D.  
Michele O'Fallon, M.D.  
Peter C. Agy, M.D.

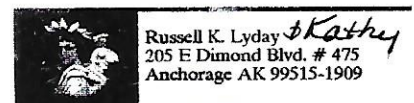
2841 DeBarr Road, Suite 23 • Anchorage, Alaska 99508  
(907) 278-1600 • Fax (907) 278-2945

James D. Martin, D.C.  
Doctor of Chiropractic  
Valley Chiropractic Clinic

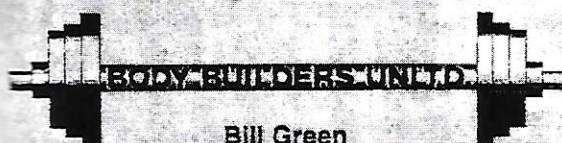
WHEELS FOR PEACE, INC.  
P. O. BOX 243594  
ANCHORAGE, AK 99524-3534

Eric Wallis  
Heidi Wallis

Jennifer Segers



Rodney P. Bales  
Rita S. Molloy



Bill Green  
PRESENTS  
Alaskan Hardcore Trainers

6901 East Tudor Road  
Anchorage, Alaska 99507  
By Appointment Only

Phone (907) 338-2639  
Phone (907) 349-2138  
Fax (907) 344-8456



Party World, Inc.

Party Rentals & Sales

Steve & Polly Curry

Phone: (907) 563-4212  
Fax: (907) 563-4203  
Warehouse: (907) 561-2558

3810 Arctic Blvd.  
Anchorage, Alaska 99508



ALL OF OHIO IS PROUD TO SUPPORT  
KARA VARGO,  
MS. WHEELCHAIR OHIO



Go  
Girl  
Go!

Love & Good Luck

Mom & Dad  
Jim, Tim & Tara  
Timmy & Jimmy  
Princess, Jasmine,  
Chip, Cinnamon,  
Sabrina, Polly & Abby





*Supporting the County of Summit  
Board of Mental Retardation and  
Developmental Disabilities at  
the Akron Civic Theatre*



*Kara, Country Star Ty Herndon,  
and Toni Foxx, WQMX DJ*



*Kara and Country  
Star Bryan White*



*Kara's Crowning at  
Ms. Wheelchair Ohio 2001*

*Live TV Interview at Music Fair 2000  
with Radio Personality Jim O'Brien*

## **Ms. Wheelchair Ohio**

89 East Howe Road Tallmadge, Ohio 44278 • (330) 634-8873

*Sponsored by The County of Summit Board of Mental Retardation  
and Developmental Disabilities and The Weaver Foundation, Inc*

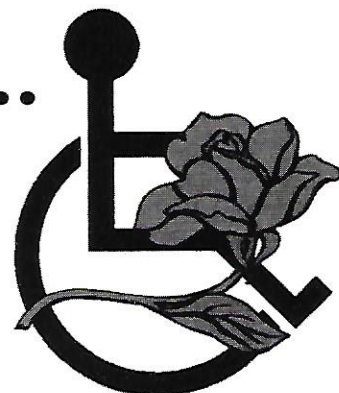
*Way to Go Kara!  
Best of Luck at Ms. Wheelchair America*

*Marie Blaurock  
Abraham Benavides  
Larry Cassidy  
Dr. Beverly Cinovec  
Meloney Cook  
Dr. Norman W. Czubaj  
Linda Dubnica  
Jackie Ebner  
Stephanie Falconer  
Jean Fish  
Jack & Cynthia Foster  
Meg Froelich  
David Isaiah & Ericka Isaiah  
Judi Jacobs  
Pearl Johnson  
Carolyn Jones-Butler  
Rose King  
Christine Lacy  
Kathy Lacy  
Lowery D. Lockard  
Bonnie Long  
Mary Mendoza  
Matt Petrick  
Debbie Poulson  
Diane Renner  
Beth Robertson  
Patrick Stephan  
Pam Sutton  
Blane White  
Stephanie Falconer*





*Ms. Wheelchair Wisconsin*  
**would like to thank the  
following sponsors.....**



**Kettle Moraine H.O.G. Chapter  
Hal's Harley Davidson  
House of Harley Davidson  
Westhill Rehab  
Milwaukee Western Bank  
Arby Construction, Inc.  
Mustang Shelly's Roadhouse, Ltd.  
Firststar Bank  
Thomas Jewelers  
Computer Aided Technology, Inc.  
Keystone Marble and Granite, Inc.  
Goldi's by Jenny**

**Mike and Diane Whitehouse  
John and Patty Diekfuss  
Dale and Jane Whitehouse  
Dave, Cheri and Devon Addis  
Gary and Sue Kasch  
Steve and Margaret Elliott  
Ron and Marguerite Kaskavitch  
Roger and Pam Ducommun  
Patrick Fitzgerald  
Bob and Lisa Lamb  
Betty Fitzgerald  
Tom Mitschke  
Rick and Mary Guhr**

**Special Thanks to Roy Theide!**

**Thank you everyone for all your support!**

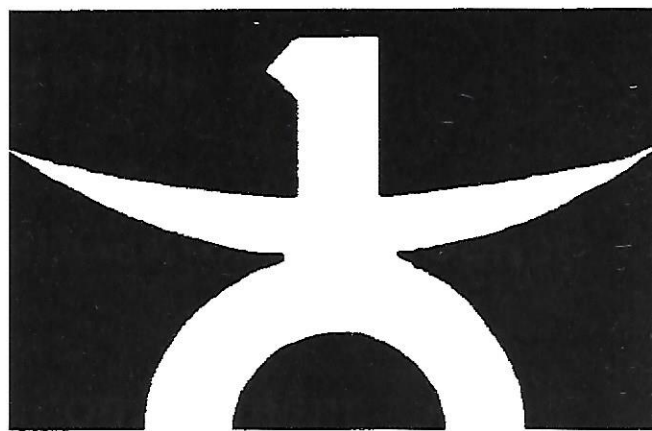
*Love, Jenny*





**BABY BACK RIBS**

**CHICKEN MEALS**



**BROWN'S  
CHICKEN  
& PASTA**

**It tastes better!**

**PARTY PACKS**

**SANDWICHES**

**Monty & Robin Raymond**  
*Owner/Operators*

**1790 E. Commercial Blvd.**  
(1/2) Mile West of Federal Hwy.)

**772-2020**

We accept Visa, Discover, & Master Card  
Call us For Catering

**PASTA**

**WING PLATTERS &  
DINNERS**



*We are Proud of You!*  
**Laura Nimz, Ms. Wheelchair Florida 2000**

**The Ms. Wheelchair Florida Pageant, Inc.  
Board of Directors**

**Rev. Lisa Muscarella**  
*President*

**Rev. Ron Muscarella**  
*Vice President & Workshop Coordinator*

**Michael Clark**  
*Treasurer*

**Michael F. Cowan**  
*Judging & Scheduling*

**Ileana Cruz-Martinez, Ms. Wheelchair Florida 1996**

**Annette Sabarese**  
*Gifts & Awards*

**Laurie Gutches**  
*Historian*

**Tammy Reed & Kathy Reed**  
**Senator Matt & Mrs. Charley Meadows**  
**Terri Kacie - Ms. Wheelchair Florida 1991**  
*Fundraising Committee*

**Yvelese Cowan**  
*Public Relations*

**Jerry Hintze**  
*Journal Coordinator*

**Laura Nimz, Ms. Wheelchair Florida 2000 & Kristina Liddle, Jr. Ms. Wheelchair 2000**



**A HOUSE  
OF TROPHIES**



**CORPORATE  
PLAQUE EXPERTS**



*The Recognition Store Since 1957*

- |                    |                  |                         |
|--------------------|------------------|-------------------------|
| • Plaques/Logos    | • Pen Sets       | • Crystal/Glass Awards  |
| • Gavel & Clocks   | • Laminations    | • Ribbons/Rosettes      |
| • Incentive Awards | • Bronze Plaques | • Lucite/Acrylic Awards |

***Ask About Our Rush Service***

**VISIT OUR SHOWROOM**  
Fort Lauderdale

(954) **763-1477**

Fax # (954) 763-1009  
1512 NE 4<sup>th</sup> Avenue





**Able Access**  
of Florida

*"Breaking Down The Barriers"*

Residential and Commercial Disability Products and Services

- Wheelchair Lifts
- Elevator Lifts
- Bathroom Accessories
- Grab Bars
- Wheelchairs
- Pool Lifts
- Ramps
- Ramp Rental
- Special Mobility Aids
- Remodeling
- Building and Construction
- ADA Consultation

"The entire staff of Able Access of Florida would like to wish Ms. Wheelchair Florida, Laura Nimz and all of the other contestants good luck in the upcoming pageant. The staff would also like to thank all of the board members and volunteers for their hard work."

5434 W. Sample Road • P.M.B. 954 • Margate, Florida 33073  
Voice: 954-984-5115 • Fax: 954-984-5124

*Miss Wheelchair of America Pageant*

**Praise the  
Lord  
for all  
His Glory**

*OY* Thomas Photography.....11902  
New Port Richey, FL 34654 (727) 868-3669



TO OUR INSPIRATION - AN EXTRAORDINARY WOMAN  
JOYCE LYNNE LACEY - MISS WHEELCHAIR MINNESOTA

THANK YOU FOR YOUR HARD WORK, DEDICATION AND  
COMMITMENT. YOU ARE TRULY AN EXCEPTIONALLY  
OUTSTANDING REPRESENTATIVE! GOD BLESS YOU.

BEST WISHES FROM YOUR FAMILY AND FRIENDS!



THE TWO THOUSAND  
NOTABLE AMERICAN  
WOMEN OF THE  
MILLENNIUM

THE WORLD WHO'S  
WHO OF WOMEN

INTERNATIONAL  
WHO'S WHO OF  
PROFESSIONAL  
AND BUSINESS  
WOMEN

2000 OUTSTANDING  
INTELLECTUALS OF  
THE 20TH CENTURY

INTERNATIONAL  
WHO'S WHO OF  
PROFESSIONALS

2000 COMMEMORATIVE  
MEDAL OF HONOR

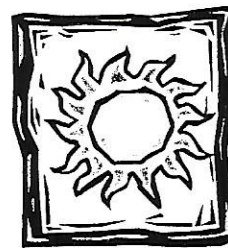
ONE THOUSAND LEADERS OF WORLD INFLUENCE  
INTERNATIONAL WOMEN OF THE MILLENNIUM  
OUTSTANDING YOUNG WOMEN OF AMERICA



Congratulations  
**Teri**

**The MWC  
Colorado  
Board of Directors**

*Wishes You  
The Best of Luck  
in Florida*



**Congratulations !!!!**

**Kris Ann Piazza**

Ms. Wheelchair New York 2000

*Share the Spirit ~~~~*



**The Ms. Wheelchair New York Board of Directors Salutes You**

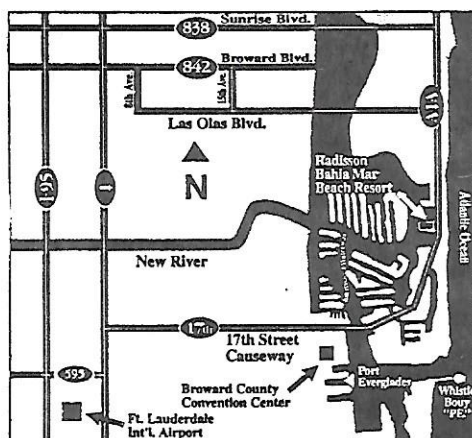




## The Radisson Bahia Mar Beach Resort

***Proud Host of the Miss Wheelchair America Program 2001***

- 300 deluxe ocean view rooms, On Command television, voice mail, iron, ironing board, in-room safe, coffee maker, hair dryers and data ports
- 18,000 square feet of flexible function space
- 4 lighted Tennis Courts, Fitness Center, and heated rooftop pool
- 10 minutes from Fort Lauderdale International Airport and 35 minutes from Miami International
- Fronted by the aqua blue waters of the Atlantic Ocean with direct private access to the beach
- Surrounded on three sides by the Intracoastal Waterway and 350-slip Bahia Mar Yachting Center
- Deep sea fishing boat rentals, scuba and snorkel trips, and glass bottom boat rides
- Close to the famous "Las Olas Blvd", - a mecca of fine restaurants, boutiques and antique shops and the newest attraction, "Riverfront" entertainment complex
- Water Taxi pickup to Fort Lauderdale's best shopping, restaurants and nightclubs
- Within walking distance to "Beach Place"- a restaurant, nightclub, and retail complex
- Alamo Car Rental on site
- Close to championship golf courses such as our newest addition, Grande Oaks-a Ray Floyd signature design with the Mark Wood Golf Academy



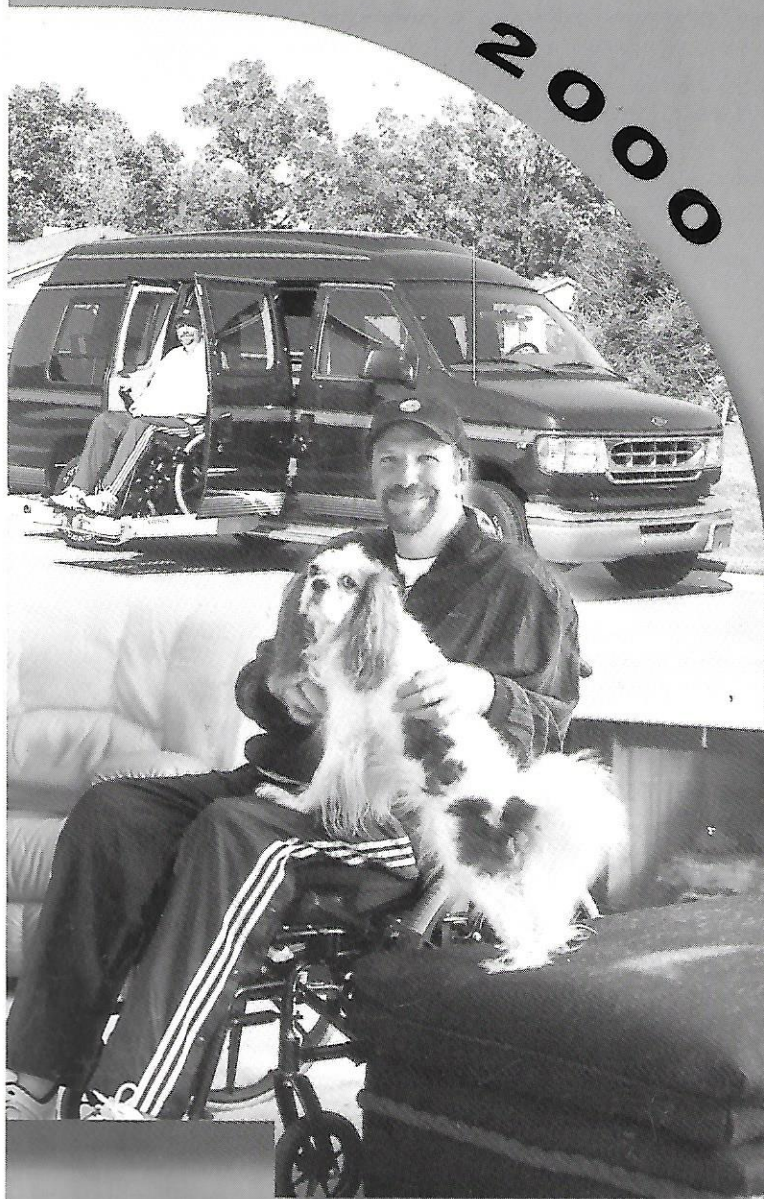
**801 Seabreeze Boulevard  
Fort Lauderdale, FL 33316  
(Four Miles from Ft. Lauderdale  
International Airport)**

**Telephone: (954) 764-2233**

**Fax: (954) 524-6912**



*Life's a Trip*  
Travel In Style!



Call Us Toll-Free  
**1 800 952 2248**

If You're Hearing Impaired, Call  
**1 800 833 0312**

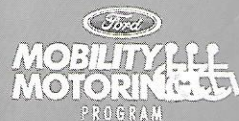
You may also visit us on the World Wide Web at  
[www.ford.com/mobilitymotoring](http://www.ford.com/mobilitymotoring)

## Ford Mobility Motoring Helps Persons With Physical Disabilities Experience Freedom And Independence.

If you're ready and determined to savor the richness of life, you're a natural for the Ford Mobility Motoring Program. Let your Ford or Lincoln Mercury Dealer show you the simple and convenient way to acquire and adapt a new 1999 or 2000 vehicle.<sup>(1)</sup>

### Ford Mobility Motoring Can Make It Possible.

- Ford, Lincoln or Mercury  
-The right vehicle solution.
- Up to \$1,000 Assistance  
-Towards the cost and installation of adaptive equipment.<sup>(2)</sup>
- Assessment Centers, Adaptive Equipment Dealers and Installers  
-Information customized for your state.
- Ford Credit Mobility Financing.



(1) Ford Mobility Motoring Program is in effect from October 1, 1999 through September 30, 2000.

(2) Ford Mobility Motoring Program will reimburse for the exact amount of the adaptation, up to a maximum of \$1,000 on adaptive equipment, and up to a maximum of \$200 on alerting devices, lumbar support or running boards, when you take new retail delivery of a 1999 or 2000 Ford, Lincoln or Mercury vehicle by September 30, 2000.

**FOLLOW THE GOOD LIFE - WHEREVER IT LEADS!**